

Remel Agglutinating Sera

Agglutinating Sera are CE marked.

For serological identification of *Bordetella* cultures by rapid slide agglutination test.

Bordetella parapertussis	2mL/Vial	R30165601
Bordetella pertussis	2mL/Vial	R30165501

For serological identification of *Brucella* cultures by tube agglutination test.

Brucella abortus	2mL/Vial	R30164801
Brucella melitensis	2mL/Vial	R30164901

For serological identification of *E. coli* by slide and/or tube agglutination test.

E. coli Polyvalent 2, types O26, O55, O111, O119, O126	2mL/Vial	R30954901
E. coli Polyvalent 3, types O86, O55, O114, O125, O127, O128	2mL/Vial	R30955001
E. coli Polyvalent 4, types O44, O112, O124, O142	2mL/Vial	R30955101

For serological identification of *H. influenzae* by rapid slide agglutination test and for use in CIE procedures.

Haemophilus influenzae type a	2mL/Vial	R30166001
Haemophilus influenzae type b	2mL/Vial	R30166101
Haemophilus influenzae type c	2mL/Vial	R30166201
Haemophilus influenzae type d	2mL/Vial	R30166301
Haemophilus influenzae type e	2mL/Vial	R30166401
Haemophilus influenzae type f	2mL/Vial	R30166501



Agglutinating Sera and Stained Suspensions.

For serological identification of *N. meningitidis* by rapid slide agglutination and CIE procedures.

Neisseria meningitidis Polyvalent Groups A - D	2mL/Vial	R30166601
Neisseria meningitidis Group A	2mL/Vial	R30166801
Neisseria meningitidis Group B	2mL/Vial	R30167501
Neisseria meningitidis Group C	2mL/Vial	R30166901
Neisseria meningitidis Group D	2mL/Vial	R30167001
Neisseria meningitidis Group W135	2mL/Vial	R30167401

For identification of flagellar (H) antigens of *Salmonella* strains by slide and/or tube agglutination tests.

Salmonella H (1, 2)	2mL/Vial	R30163301
Salmonella H (1, 5)	2mL/Vial	R30163401
Salmonella H (1, 6)	2mL/Vial	R30163501
Salmonella H (1, 7)	2mL/Vial	R30163601
Salmonella H (a)	2mL/Vial	R30160201
Salmonella H (b)	2mL/Vial	R30160301
Salmonella H (c)	2mL/Vial	R30160401
Salmonella H (d)	2mL/Vial	R30160501
Salmonella H (eh)	2mL/Vial	R30160701
Salmonella H (enx)	2mL/Vial	R30160801
Salmonella H (f, g)	2mL/Vial	R30161101
Salmonella H (gm)	2mL/Vial	R30161201

Remel Agglutinating Sera: Flagellar (H) antigens of *Salmonella* strains *continued*

Diagnostic Tests

Salmonella H (i)	2mL/Vial	R30161601
Salmonella H (r)	2mL/Vial	R30162201
Salmonella H (y)	2mL/Vial	R30162301
Salmonella H Polyvalent, Phases 1 and 2	2mL/Vial	R30858501
Salmonella H Polyvalent, Phase 2 (1, 2, 5, 6, 7)	2mL/Vial	R30163201
Salmonella H (E) Polyvalent, for eh, enx, enz15	2mL/Vial	R30160601
Salmonella H (G) Polyvalent, for gm, gp, fg, gq, fgt, gms, gmt, gt, gmq, gpu	2mL/Vial	R30160601
Salmonella H (L) Polyvalent, for lv, lw, lz13, lz28, lz38, lz40	2mL/Vial	R30161801
Salmonella H Rapid Diagnostic 1 (b, d, E, r)	2mL/Vial	R30959801
Salmonella H Rapid Diagnostic 2 (b, E, k, L)	2mL/Vial	R30959901
Salmonella H Rapid Diagnostic 3 (d, E, G, k)	2mL/Vial	R30160101

Salmonella O Polyvalent (group A - G)	2mL/Vial	R30858101
Salmonella O Polyvalent (group A - S)	2mL/Vial	R30858201
Salmonella O/Vi	2mL/Vial	R30957401

For identification of somatic O antigens of *Salmonella* strains by slide and/or tube agglutination tests.

Salmonella O Factor 2 (group A)	2mL/Vial	R30956701
Salmonella O Factors 3, 10, 15, 19 (group E)	2mL/Vial	R30956801
Salmonella O Factor 4 (group B)	2mL/Vial	R30956901
Salmonella O Factor 5 (group B)	2mL/Vial	R30957001
Salmonella O Factor 6, 7 (group C1)	2mL/Vial	R30957101
Salmonella O Factor 8 (group C2)	2mL/Vial	R30957201
Salmonella O Factor 9 (group D)	2mL/Vial	R30957301
Salmonella O Factor 10 (group E1)	2mL/Vial	R30957501
Salmonella O Factor 11 (group F)	2mL/Vial	R30957601
Salmonella O Factor 13, 22 (group G)	2mL/Vial	R30957701
Salmonella O Factor 14 (group H)	2mL/Vial	R30957801
Salmonella O Factor 15 (group E2)	2mL/Vial	R30957901
Salmonella O Factor 16 (group I)	2mL/Vial	R30958001
Salmonella O Factor 19 (group E4)	2mL/Vial	R30958301
Salmonella O Factor 27 (group B)	2mL/Vial	R30958601
Salmonella O Factor 39 (group Q)	2mL/Vial	R30959101

Remel Agglutinating Sera *continued*

For serological identification of *Shigella* cultures by rapid slide agglutination test.

Shigella boydii Polyvalent 1 (1 to 6)	2mL/Vial	R30163901
Shigella boydii Polyvalent 2 (7 to 11)	2mL/Vial	R30164001
Shigella boydii Polyvalent 3 (12 to 15)	2mL/Vial	R30164101
Shigella dysenteriae Polyvalent (1-10)	2mL/Vial	R30163701
Shigella flexneri Polyvalent (1 to 6, X and Y)	2mL/Vial	R30163801
Shigella sonnei (Phases 1 and 2)	2mL/Vial	R30164201

For serological identification of *Vibrio cholerae* by slide and/or tube agglutination test.

Vibrio cholerae Polyvalent	2mL/Vial	R30165001
-----------------------------------	----------	-----------

General Diagnostic Tests

ALN Disk with Reagent

For differentiation of *Fusobacterium* spp. from *Bacteroides* spp.

	25 Tests/Kit	R211356
--	--------------	---------

An-Ident Disk

For the presumptive identification of gram-negative anaerobes. Contents: one cartridge each of erythromycin 60µg, rifampin 15µg, colistin 10µg, penicillin 2 Units, kanamycin 1000µg, vancomycin 5µg. 50 Disks/Cartridge. CE marked.

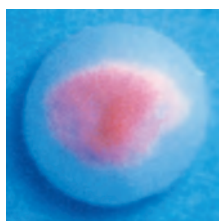
	6 Cart/Pk.	DD0006A
--	------------	---------

Anaerobe tests

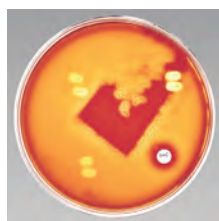
See *Diagnostic Tests Quick Reference* ([click here](#)).

Autoimmune/Immunology tests

See *Diagnostic Tests Quick Reference* ([click here](#)).



A.L.A. Disk w/ positive reaction for *H. parainfluenzae* under ultraviolet light.



Bacitracin Disk (A Disk) on Blood Agar w/ group A beta-hemolytic streptococci.



BactiCard Neisseria w/ positive reactions.



BactiStaph latex agglutination test kit with positive reaction.

Bacillus tests

See *Diagnostic Tests Quick Reference* ([click here](#)).

Bacitracin Disk

(A Disk) For differentiation of Lancefield group A streptococci from other beta-hemolytic streptococci. 0.04 units. 50 Disks/Cartridge.

	5 Cart/Pk.	DD0030S
--	------------	---------

BactiCard™ Candida

For presumptive identification of *Candida albicans* using enzyme technology. Tests: PRO, MUGAL. CE marked.

	25 Tests/Kit	R21106
--	--------------	--------

BactiCard E. coli

For presumptive identification of *Escherichia coli* using enzyme technology. Tests: Indole, MUG. CE marked.

	25 Tests/Kit	R21108
--	--------------	--------

BactiCard Neisseria

For presumptive identification of pathogenic *Neisseria* spp. and *Moraxella catarrhalis* isolated on selective media using enzyme technology. Tests: IB, PRO, GLUT, BGAL. CE marked.

	25 Tests/Kit	R21110
--	--------------	--------

BactiCard Strep

Latex agglutination test for detection of clumping factor and protein A for identification of *Staphylococcus aureus*. Contents: Latex reagent, positive control, negative control, disposable slides and stirring sticks. CE marked.

	25 Tests/Kit	R21112
--	--------------	--------

BactiStaph

Latex agglutination test for detection of clumping factor and protein A for identification of *Staphylococcus aureus*. Contents: Latex reagent, positive control, negative control, disposable slides and stirring sticks. CE marked.

	150 Tests/Kit	R21144
	450 Tests/Kit	R21143