

Quality Control

Contents:

Culti-Loops.....	181
Culti-Loop Sets	198
CFUrine Kit Quality Control	203
Quanti-Cult Plus	204
Waterbugs.....	205
WKITS	205
Spore Strips	206
Molecular Diagnostic Test Controls	206
QC-Slide Stain Controls.....	206
Reagent QC Kit	206

Culti-Loops

- Thermo Scientific™ Culti-Loops™ are ready-to-use QC organisms on disposable inoculating loops
- Over 600 strains available, ATCC® and other known reference organisms
- Bacteria, fungi, mycobacteria, mycoplasma and ureaplasma
- Format can be customized for specific clinical or environmental strains
- The Thermo Scientific™ Culti-Loop™ is available in multiple kit configurations for major ID/AST systems

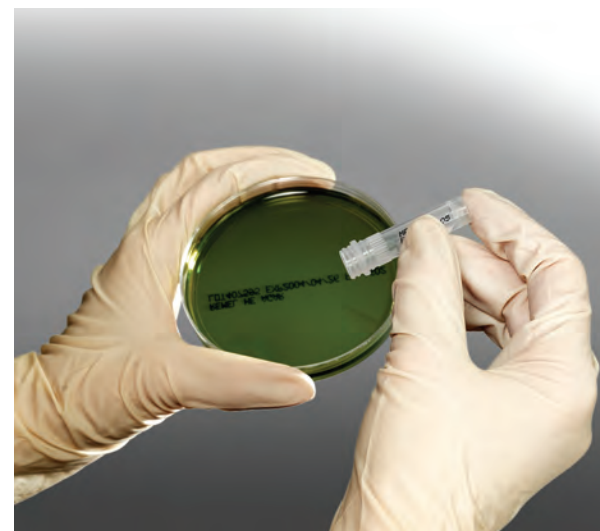


©2018 Thermo Fisher Scientific Inc. All rights reserved.



Quanti-Cult

- Ready-to-use QC organisms, delivering <100 CFUs
- No dilution step needed
- ATCC® referenced organisms
- Format can be customized for specific clinical or environmental strains
- The Thermo Scientific™ Quanti-Cult Plus™ offers consistent CFU counts for 8 hours after reconstitution



©2018 Thermo Fisher Scientific Inc. All rights reserved.

Culti-Loops

Culti-Loops and Mycobacti-Loop products are ready to use, disposable inoculating loops containing stabilized, preserved, viable microorganisms. Each loop may be dissolved in rehydration fluid or streaked directly onto an appropriate medium. Culti-Loops products are recommended for use in performance testing of media, stains, reagents and identification kits, and for the evaluation of bacteriological procedures. Each Culti-Loop is individually sealed in a foil pouch and packaged 5 loops per package. Mycobacti-Loop products are individually sealed in a foil pouch and packaged 1 loop per package. All Culti-Loops products are **CE marked**.

A

<i>Achromobacter xylosoxidans</i> subsp. <i>xylosoxidans</i> ATCC® 27061™†	Culti-Loop	R4601012
<i>Acinetobacter baumannii</i> ATCC® 19606™†	Culti-Loop	R4601007
<i>Acinetobacter baumannii</i> ATCC® BAA-747™†	Culti-Loop	R4601009
<i>Acinetobacter lwoffii</i> ATCC® 17925™†	Culti-Loop	R4600503
<i>Acinetobacter lwoffii</i> ATCC® 17925™†	Culti-Loop	R4600503
<i>Acinetobacter</i> sp. ATCC® 9957™†	Culti-Loop	R4609204
<i>Acinetobacter</i> sp. ATCC® 49137™†	Culti-Loop	R4601002
<i>Acinetobacter</i> sp. ATCC® 49466™†	Culti-Loop	R4600501
<i>Actinomyces odontolyticus</i> ATCC® 17929™†	Culti-Loop	R4601008
<i>Actinomyces viscosus</i> ATCC® 15987™†	Culti-Loop	R4600500
<i>Aerococcus viridans</i> ATCC® 11563™†	Culti-Loop	R4600510



Culti-Loop.



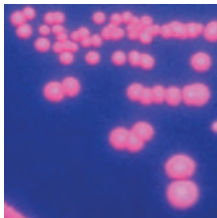
Culti-Loop inoculation of Blood Agar plate.

<i>Aerococcus viridans</i> ATCC® 11563™†	Culti-Loop	R4601019
<i>Aerococcus viridans</i> ATCC® 700406™†	Culti-Loop	R4601022
<i>Aeromonas caviae</i> ATCC® 15468™†	Culti-Loop	R4601021
<i>Aeromonas hydrophila</i> ATCC® 7965™†	Culti-Loop	R4609350
<i>Aeromonas hydrophila</i> ATCC® 7966™†	Culti-Loop	R4601020
<i>Aeromonas hydrophila</i> ATCC® 35654™†	Culti-Loop	R4601013
<i>Aeromonas hydrophila</i> ATCC® 49140™†	Culti-Loop	R4601003
<i>Aeromonas salmonicida</i> ATCC® 33658™†	Culti-Loop	R4609456
<i>Aeromonas veronii</i> biogroup <i>sobria</i> ATCC® 9071™†	Culti-Loop	R4601005
<i>Aggregatibacter aphrophilus</i> ATCC® 7901™†	Culti-Loop	R4604000
<i>Aggregatibacter aphrophilus</i> ATCC® 19415™† X factor not required.	Culti-Loop	R4603002
<i>Aggregatibacter aphrophilus</i> ATCC® 33389™†	Culti-Loop	R4603020
<i>Aggregatibacter aphrophilus</i> ATCC® 49146™†	Culti-Loop	R4603901
<i>Aggregatibacter aphrophilus</i> ATCC® 49917™†	Culti-Loop	R4603902
<i>Alcaligenes faecalis</i> subsp. <i>faecalis</i> ATCC® 8750™†	Culti-Loop	R4601006
<i>Alcaligenes faecalis</i> subsp. <i>faecalis</i> ATCC® 35655™†	Culti-Loop	R4601011
<i>Alternaria alternata</i> TX 8025	Culti-Loop	R4601016
<i>Aneurinibacillus aneurinolyticus</i> ATCC® 11376™†	Culti-Loop	R4601015
<i>Arcanobacterium haemolyticum</i> ATCC® BAA-1784™†	Culti-Loop	R4609413

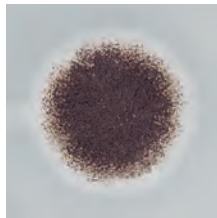
<i>Arcanobacterium pyogenes</i> ATCC® 19411™†	Culti-Loop	R4600504
<i>Arcanobacterium pyogenes</i> ATCC® 49698™†	Culti-Loop	R4600502
<i>Aspergillus brasiliensis</i> ATCC® 9642™†	Culti-Loop	R4601102
<i>Aspergillus brasiliensis</i> ATCC® 16404™†	Culti-Loop	R4601100
<i>Aspergillus fumigatus</i> KM 8001	Culti-Loop	R4601018
<i>Aspergillus oryzae</i> ATCC® 10124™†	Culti-Loop	R4601017
<i>Atopobium vaginae</i> ATCC® BAA-55™†	Culti-Loop	R4609450

B

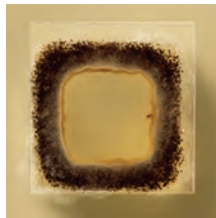
<i>Bacillusadius</i> ATCC® 14574™†	Culti-Loop	R4609394
<i>Bacillus cereus</i> ATCC® 11778™†	Culti-Loop	R4601220
<i>Bacillus cereus</i> ATCC® 14579™†	Culti-Loop	R4601217
<i>Bacillus circulans</i> ATCC® 61™†	Culti-Loop	R4601216
<i>Bacillus licheniformis</i> ATCC® 12759™†	Culti-Loop	R4601233
<i>Bacillus megaterium</i> ATCC® 14581™†	Culti-Loop	R4609395
<i>Bacillus polymyxa</i> ATCC® 842™†	See <i>Paenibacillus polymyxa</i> (click here).	
<i>Bacillus pumilus</i> ATCC® BAA-1434™†	Culti-Loop	R4609379
<i>Bacillus sphaericus</i> ATCC® 4525™†	See <i>Lysinibacillus sphaericus</i> (click here).	
<i>Bacillus stearothermophilus</i>	See <i>Geobacillus stearothermophilus</i> (click here).	
<i>Bacillus subtilis</i> ATCC® 6633™†	Culti-Loop	R4601221
<i>Bacteroides distasonis</i> ATCC® 8503™†	See <i>Parabacteroides distasonis</i> (click here).	
<i>Bacteroides fragilis</i> ATCC® 23745™†	Culti-Loop	R4601251
<i>Bacteroides fragilis</i> ATCC® 25285™†	Culti-Loop	R4601250
<i>Bacteroides ovatus</i> ATCC® 8483™†	Culti-Loop	R4601222
<i>Bacteroides ovatus</i> ATCC® BAA-1296™†	Culti-Loop	R4609374
<i>Bacteroides ovatus</i> ATCC® BAA-1304™†	Culti-Loop	R4609376
<i>Bacteroides thetaiotaomicron</i> ATCC® 29741™†	Culti-Loop	R4601260



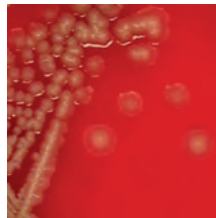
Aggregatibacter aphrophilus ATCC® 7901™† on Porphyrin Test Agar under UV light.



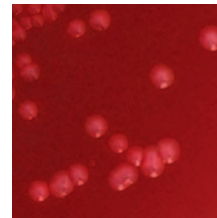
Aspergillus brasiliensis ATCC® 16404™† on Czapek Agar.



Aspergillus brasiliensis ATCC® 16404™† on Slide Culture Plate.

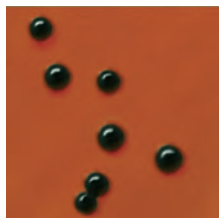


Bacillus subtilis ATCC 6633™† on Blood Agar.



Bacteroides fragilis ATCC® 25285™† on Anaerobic Reducible Blood Agar.

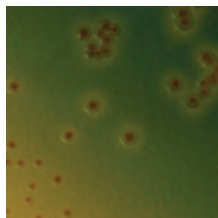
<i>Bacteroides uniformis</i> ATCC® 8492™†	Culti-Loop	R4601259
<i>Bacteroides ureolyticus</i> ATCC® 33387™†	Culti-Loop	R4601201
<i>Bacteroides vulgatus</i> ATCC® 8482™†	Culti-Loop	R4601261
<i>Bifidobacterium breve</i> ATCC® 15700™†	Culti-Loop	R4606801
<i>Blastoschizomyces capitatus</i> ATCC® 10663™†	See <i>Geothrichum capitatum</i> for the Culti-Loop (click here).	
<i>Bordetella bronchiseptica</i> ATCC® 4617™†	Culti-Loop	R4601223
<i>Bordetella bronchiseptica</i> ATCC® 10580™†	Culti-Loop	R4601224
<i>Bordetella pertussis</i> ATCC® 9340™†	Culti-Loop	R4601225
<i>Bordetella pertussis</i> ATCC® 12742™†	Culti-Loop	R4609213
<i>Brevibacillus agri</i> ATCC® 51663™†	Culti-Loop	R4607217
<i>Brevibacillus laterosporus</i> ATCC® 64™†	Culti-Loop	R4607228
<i>Brevundimonas diminuta</i> ATCC® 11568™†	Culti-Loop	R4607219
<i>Brevundimonas diminuta</i> ATCC® 19146™†	Culti-Loop	R4607200
<i>Brochothrix thermosphacta</i> ATCC® 11509™†	Culti-Loop	R4609038
<i>Burkholderia cepacia</i> ATCC® 25416™†	Culti-Loop	R4605220
<i>Burkholderia cepacia</i> ATCC® 25608™†	Culti-Loop	R4601232



Bacteroides thetaiotaomicron ATCC® 29741™† on KBE Agar.



Bordetella pertussis ATCC® 12742™† on Jones Kendrick Transport Medium.

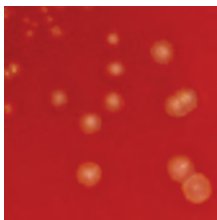


Burkholderia cepacia ATCC® 25416™† on OFPBL Medium.

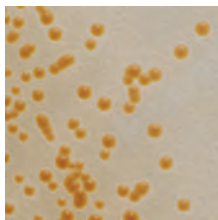
C

<i>Campylobacter coli</i> ATCC® 33559^{TM†}	Culti-Loop	R4609039
<i>Campylobacter coli</i> ATCC® 43478^{TM†}	Culti-Loop	R4609387
<i>Campylobacter jejuni</i> subsp. <i>jejuni</i> ATCC® 29428^{TM†}	Culti-Loop	R4601410
<i>Campylobacter jejuni</i> subsp. <i>jejuni</i> ATCC® 33291^{TM†}	Culti-Loop	R4601400
<i>Campylobacter jejuni</i> subsp. <i>jejuni</i> ATCC® 33292^{TM†}	Culti-Loop	R4607070
<i>Campylobacter jejuni</i> subsp. <i>jejuni</i> ATCC® 33560^{TM†}	Culti-Loop	R4609498
<i>Campylobacter jejuni</i> ATCC® BAA-1153^{TM†}	Culti-Loop	R4601440
<i>Candida albicans</i> ATCC® 2091^{TM†}	Culti-Loop	R4601523
<i>Candida albicans</i> ATCC® 10231^{TM†}	Culti-Loop	R4601503
<i>Candida albicans</i> ATCC® 14053^{TM†}	Culti-Loop	R4601501
<i>Candida albicans</i> ATCC® 36232^{TM†}	Culti-Loop	R4601239
<i>Candida albicans</i> ATCC® 60193^{TM†}	Culti-Loop	R4601502
<i>Candida albicans</i> ATCC® 66027^{TM†}	Culti-Loop	R4601495
<i>Candida albicans</i> ATCC® 90028^{TM†}	Culti-Loop	R4601496
<i>Candida geochares</i> ATCC® 36852^{TM†}	Culti-Loop	R4601401
<i>Candida glabrata</i> ATCC® 2001^{TM†}	Culti-Loop	R4601504
<i>Candida glabrata</i> ATCC® 15126^{TM†}	Culti-Loop	R4601513
<i>Candida glabrata</i> ATCC® 66032^{TM†}	Culti-Loop	R4601511
<i>Candida glabrata</i> ATCC® MYA-2950^{TM†}	Culti-Loop	R4601505
<i>Candida guilliermondii</i> ATCC® 6260^{TM†}	Culti-Loop	R4601521

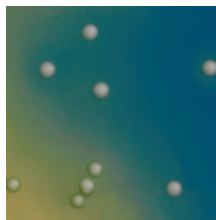
<i>Candida kefyr</i> ATCC® 2512^{TM†}	Culti-Loop	R4601507
<i>Candida kefyr</i> ATCC® 66028^{TM†}	Culti-Loop	R4601512
<i>Candida kefyr</i> ATCC® 204093^{TM†}	Culti-Loop	R4608013
<i>Candida krusei</i> ATCC® 14243^{TM†}	Culti-Loop	R4601510
<i>Candida lusitanae</i> ATCC® 34449^{TM†}	Culti-Loop	R4601243
<i>Candida lusitanae</i> ATCC® 42720^{TM†}	Culti-Loop	R4601506
<i>Candida lusitanae</i> ATCC® 66035^{TM†}	Culti-Loop	R4601516
<i>Candida parapsilosis</i> ATCC® 22019^{TM†}	Culti-Loop	R4601518
<i>Candida parapsilosis</i> ATCC® 34136^{TM†}	Culti-Loop	R4601515
<i>Candida tropicalis</i> ATCC® 750^{TM†}	Culti-Loop	R4601240
<i>Candida tropicalis</i> ATCC® 66029^{TM†}	Culti-Loop	R4601517
<i>Candida tropicalis</i> ATCC® 201380^{TM†}	Culti-Loop	R4601244
<i>Candida utilis</i> ATCC® 9950^{TM†}	Culti-Loop	R4608012
<i>Cellulosimicrobium cellulans</i> ATCC® 27402^{TM†}	Culti-Loop	R4601544
<i>Cellulosimicrobium cellulans</i> ATCC® BAA-1816^{TM†}	Culti-Loop	R4609421
<i>Cellulosimicrobium cellulans</i> ATCC® BAA-1817^{TM†}	Culti-Loop	R4609422
<i>Citrobacter braakii</i> ATCC® 10625^{TM†}	Culti-Loop	R4601801
<i>Citrobacter diversus</i> KM 11012	Culti-Loop	R4601508
<i>Citrobacter freundii</i> ATCC® 8090^{TM†}	Culti-Loop	R4601800
<i>Clostridium barati</i> ATCC® 27638^{TM†}	Culti-Loop	R4601615
<i>Clostridium difficile</i> ATCC® 9689^{TM†}	Culti-Loop	R4601610



Campylobacter jejuni ATCC® 33291^{TM†} on C VA Medium.



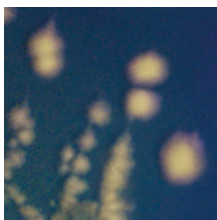
Candida albicans ATCC® 10231^{TM†} on BIGGY Agar.



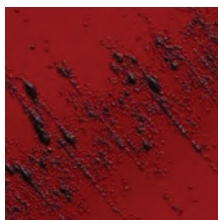
Candida albicans ATCC® 10231^{TM†} on Candida BCG Agar.

<i>Clostridium difficile</i> ATCC® 43255™†	Culti-Loop	R4601603
<i>Clostridium difficile</i> ATCC® 700057™†	Culti-Loop	R4609452
<i>Clostridium difficile</i> ATCC® BAA-1870™†	Culti-Loop	R4609433
<i>Clostridium difficile</i> ATCC® BAA-1871™†	Culti-Loop	R4609434
<i>Clostridium difficile</i> ATCC® BAA-1872™†	Culti-Loop	R4609435
<i>Clostridium difficile</i> ATCC® BAA-1873™†	Culti-Loop	R4609436
<i>Clostridium difficile</i> ATCC® BAA-1874™†	Culti-Loop	R4609437
<i>Clostridium difficile</i> ATCC® BAA-1875™†	Culti-Loop	R4609438
<i>Clostridium histolyticum</i> ATCC® 19401™†	Culti-Loop	R4601601
<i>Clostridium novyi</i> ATCC® 7659™†	Culti-Loop	R4601605
<i>Clostridium novyi</i> Type A ATCC® 19402™††	Culti-Loop	R4609220
<i>Clostridium perfringens</i> ATCC® 13124™†	Culti-Loop	R4601600
<i>Clostridium septicum</i> ATCC® 12464™†	Culti-Loop	R4601650
<i>Clostridium sordellii</i> ATCC® 9714™†	Culti-Loop	R4601602
<i>Clostridium sporogenes</i> ATCC® 3584™†	Culti-Loop	R4601701
<i>Clostridium sporogenes</i> ATCC® 11437™†	Culti-Loop	R4601703
<i>Clostridium tertium</i> ATCC® 19405™†	Culti-Loop	R4601509
<i>Corynebacterium diphtheriae</i> ATCC® 13812™†	Culti-Loop	R4609234
<i>Corynebacterium jeikeium</i> ATCC® 43734™†	Culti-Loop	R4601901
<i>Corynebacterium minutissimum</i> ATCC® 23348™†	Culti-Loop	R4601904
<i>Corynebacterium pseudodiphtheriticum</i> ATCC® 10700™†	Culti-Loop	R4601902
<i>Corynebacterium pseudodiphtheriticum</i> ATCC® 10701™†	Culti-Loop	R4601903

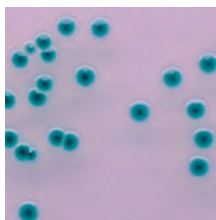
<i>Corynebacterium renale</i> ATCC® 19412™†	Culti-Loop	R4601906
<i>Corynebacterium renale</i> ATCC® BAA-1785™†	Culti-Loop	R4609415
<i>Corynebacterium striatum</i> ATCC® BAA-1293™†	Culti-Loop	R4609308
<i>Corynebacterium urealyticum</i> ATCC® 43044™†	Culti-Loop	R4609414
<i>Corynebacterium xerosis</i> ATCC® 373™†	Culti-Loop	R4601905
<i>Cronobacter muytjensii</i> ATCC® 51329™†	Culti-Loop	R4607093
<i>Cryptococcus albidus</i> ATCC® 66030™†	Culti-Loop	R4601710
<i>Cryptococcus albidus</i> var. <i>albidus</i> ATCC® 10666™†	Culti-Loop	R4601811
<i>Cryptococcus albidus</i> var. <i>albidus</i> ATCC® 34140™†	Culti-Loop	R4601813
<i>Cryptococcus humicolus</i> ATCC® 9949™††	Culti-Loop	R4601101
<i>Cryptococcus laurentii</i> ATCC® 18803™†	Culti-Loop	R4601241
<i>Cryptococcus laurentii</i> ATCC® 66036™†	Culti-Loop	R4601711
<i>Cryptococcus laurentii</i> ATCC® 76483™††	Culti-Loop	R4601910
<i>Cryptococcus neoformans</i> ATCC® 14116™†	Culti-Loop	R4601812
<i>Cryptococcus neoformans</i> ATCC® 32045™†	Culti-Loop	R4609327
<i>Cryptococcus neoformans</i> ATCC® 34877™†	Culti-Loop	R4601714
<i>Cryptococcus neoformans</i> ATCC® 66031™†	Culti-Loop	R4601712
<i>Cryptococcus neoformans</i> ATCC® 76484™†	Culti-Loop	R4601912
<i>Cryptococcus neoformans</i> ATCC® 204092™†	Culti-Loop	R4608016
<i>Cryptococcus uniguttulatus</i> ATCC® 66033™†	Culti-Loop	R4601713
<i>Curtobacterium pusillum</i> ATCC® 19096™†	Culti-Loop	R4609418
<i>Curvularia</i> sp. KM 8023	Culti-Loop	R4601705



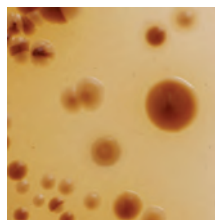
Clostridium difficile ATCC® 9689™† on CCFa Agar under ultraviolet light.



Corynebacterium diphtheriae ATCC® 13812™† on Cystine Tellurite Blood Agar.



Cronobacter spp. on Cronobacter Sakazakii Isolation Agar.



Cryptococcus neoformans ATCC® 14116™† on Birdseed Agar.

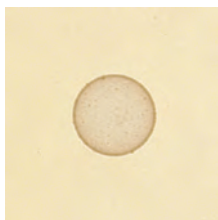
E

Edwardsiella tarda ATCC® 15947™†	Culti-Loop	R4601973
Eggerthella lenta ATCC® 43055™†	Culti-Loop	R4601951
Eikenella corrodens ATCC® 23834™†	Culti-Loop	R4601974
Eikenella corrodens ATCC® BAA-1152™†	Culti-Loop	R4601947
Elizabethkingia meningoseptica ATCC® 13253™†	Culti-Loop	R4602002
Enterobacter aerogenes ATCC® 13048™†	Culti-Loop	R4607080
Enterobacter aerogenes ATCC® 35028™†	Culti-Loop	R4607081
Enterobacter aerogenes ATCC® 35029™†	Culti-Loop	R4607082
Enterobacter aerogenes ATCC® 49701™†	Culti-Loop	R4601941
Enterobacter aerogenes ATCC® 51697™†	Culti-Loop	R4609412
Enterobacter cloacae subsp. cloacae ATCC® 13047™†	Culti-Loop	R4607090
Enterobacter cloacae subsp. cloacae ATCC® 23355™†	Culti-Loop	R4607091
Enterobacter cloacae subsp. cloacae ATCC® 35030™†	Culti-Loop	R4601945
Enterobacter cloacae subsp. cloacae ATCC® 49141™†	Culti-Loop	R4601972
Enterobacter gergoviae ATCC® 33028™†	Culti-Loop	R4601940
Enterobacter hormaechei ATCC® 700323™†	Culti-Loop	R4607094
Enterobacter sakazakii ATCC® 51329™†	See <i>Cronobacter muytjensii</i> (click here).	
Enterococcus avium ATCC® 14025™†	Culti-Loop	R4607028
Enterococcus avium ATCC® 49464™†	See <i>Enterococcus raffinosus</i> (click here).	
Enterococcus casseliflavus ATCC® 25788™†	Culti-Loop	R4609289

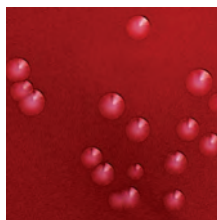
Enterococcus durans ATCC® 6056™†	Culti-Loop	R4607032
Enterococcus durans ATCC® 11576™†	Culti-Loop	R4601957
Enterococcus durans ATCC® 49135™†	See <i>Enterococcus hirae</i> ATCC® 49135™† (click here).	
Enterococcus durans ATCC® 49135™†	Culti-Loop	R4607086
Enterococcus durans ATCC® 49479™†	Culti-Loop	R4601952
Enterococcus faecalis ATCC® 7080™†	Culti-Loop	R4606854
Enterococcus faecalis ATCC® 19433™†	Culti-Loop	R4601990
Enterococcus faecalis ATCC® 29212™† For susceptibility testing quality control.	Culti-Loop	R4607030
Enterococcus faecalis ATCC® 35038™†	Culti-Loop	R4609425
Enterococcus faecalis ATCC® 49149™†	Culti-Loop	R4607087
Enterococcus faecalis ATCC® 49452™†	Culti-Loop	R4601984
Enterococcus faecalis ATCC® 51299™† Vancomycin-resistant.	Culti-Loop	R4601996
Enterococcus faecium ATCC® 35667™†	Culti-Loop	R4601956
Enterococcus faecium ATCC® 35667™†	Culti-Loop	R4731956
Enterococcus faecium ATCC® 51559™†	Culti-Loop	R4609383
Enterococcus faecium ATCC® 700221™†	Culti-Loop	R4609432
Enterococcus gallinarum ATCC® 700425™†	Culti-Loop	R4601958
Enterococcus hirae ATCC® 8043™†	Culti-Loop	R4601966
Enterococcus raffinosus ATCC® 49464™†	Culti-Loop	R4601994
Enterococcus saccharolyticus ATCC® 43076™†	Culti-Loop	R4609393



Enterococcus faecalis
ATCC® 29212™† on BEA.



Enterococcus faecalis
ATCC® 51299™† on BHI
w/vancomycin.



Enterococcus faecalis
ATCC® 51299™† on
Columbia CNA
with Sheep Blood,
Vancomycin.

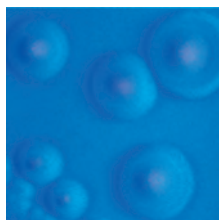


† The ATCC Licensed Derivative Emblem, the ATCC Licensed Derivative word mark, and the ATCC catalog marks are trademarks of ATCC. Remel Inc. is licensed to use these trademarks and to sell products derived from ATCC(R) cultures. The identity, purity, and authenticity of the Licensed Products are exclusively the responsibility of Remel Inc., and not ATCC.

<i>Epidermophyton floccosum</i> ATCC® 52066^{TM†}	Culti-Loop	R4601977
<i>Erysipelothrix rhusiopathiae</i> ATCC® 19414^{TM†}	Culti-Loop	R4601978
<i>Escherichia coli</i> ATCC® 4157^{TM†}	Culti-Loop	R4607088
<i>Escherichia coli</i> ATCC® 8739^{TM†}	Culti-Loop	R4607085
<i>Escherichia coli</i> ATCC® 10536^{TM†}	Culti-Loop	R4601968
<i>Escherichia coli</i> ATCC® 11229^{TM†}	Culti-Loop	R4601997
<i>Escherichia coli</i> ATCC® 11775^{TM†}	Culti-Loop	R4601989
<i>Escherichia coli</i> ATCC® 12014^{TM†}	Culti-Loop	R4609352
<i>Escherichia coli</i> ATCC® 13706^{TM†}	Culti-Loop	R4609469
<i>Escherichia coli</i> ATCC® 25922^{TM†} For susceptibility testing quality control.	Culti-Loop	R4607050
<i>Escherichia coli</i> ATCC® 29194^{TM†}	Culti-Loop	R4601986
<i>Escherichia coli</i> ATCC® 35218^{TM†}	Culti-Loop	R4601971
<i>Escherichia coli</i> ATCC® 35421^{TM†}	Culti-Loop	R4607084
<i>Escherichia coli</i> ATCC® 51446^{TM†} For ESBL testing.	Culti-Loop	R4607097
<i>Escherichia coli</i> ATCC® 51755^{TM†}	Culti-Loop	R4601998
<i>Escherichia coli</i> serotype O157:H7 ATCC® 43888^{TM†} Does not produce or possess genes for Shiga-like toxin I or II.	Culti-Loop	R4601965
<i>Exiguobacterium aurantiacum</i> ATCC® 49676^{TM†}	Culti-Loop	R4601900
<i>Exophiala jeanselmei</i> ATCC® 10224^{TM†}	Culti-Loop	R4601980

F

<i>Finegoldia magna</i> ATCC® 29328^{TM†}	Culti-Loop	R4605002
<i>Fluoribacter bozemanae</i> ATCC® 33217^{TM†}	Culti-Loop	R4603951
<i>Fluoribacter dumoffii</i> ATCC® 33279^{TM†}	Culti-Loop	R4603952
<i>Fonsecaea pedrosoi</i> ATCC® 28174^{TM†}	Culti-Loop	R4601981
<i>Fusobacterium mortiferum</i> ATCC® 9817^{TM†}	Culti-Loop	R4602009
<i>Fusobacterium mortiferum</i> ATCC® 25557^{TM†}	Culti-Loop	R4609207
<i>Fusobacterium necrophorum</i> ATCC® 25286^{TM†}	Culti-Loop	R4609375
<i>Fusobacterium nucleatum</i> subsp. <i>nucleatum</i> ATCC® 25586^{TM†}	Culti-Loop	R4602010
<i>Fusobacterium nucleatum</i> subsp. <i>polymorphum</i> ATCC® 10953^{TM†}	Culti-Loop	R4602012



Escherichia coli ATCC® 25922^{TM†} on MacConkey with Sorbitol, MUG under ultraviolet light.



Escherichia coli ATCC® 25922^{TM†} on MacConkey.



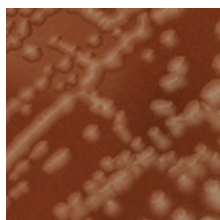
Gardnerella vaginalis ATCC® 14018^{TM†} on Chocolate Agar.

G

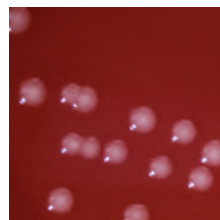
<i>Gardnerella vaginalis</i> ATCC® 14018™†	Culti-Loop	R4602050
<i>Gardnerella vaginalis</i> ATCC® 49145™†	Culti-Loop	R4602051
<i>Gemella morbillorum</i> ATCC® 27824™†	Culti-Loop	R4602100
<i>Geobacillus stearothermophilus</i> ATCC® 7953™†	Culti-Loop	R4601218
<i>Geobacillus stearothermophilus</i> ATCC® 10149™†	Culti-Loop	R4601202
<i>Geobacillus stearothermophilus</i> ATCC® 12978™†	Culti-Loop	R4603011
<i>Geobacillus stearothermophilus</i> ATCC® 12980™†	Culti-Loop	R4601219
<i>Geotrichum candidum</i> ATCC® 34614™†	Culti-Loop	R4603001
<i>Geotrichum capitatum</i> ATCC® 10663™†	Culti-Loop	R4606800
<i>Geotrichum capitatum</i> ATCC® 28576™†	Culti-Loop	R4606805



Haemophilus haemolyticus ATCC® 33930™† on Haemophilus Isolation Agar.



Haemophilus influenzae Type b ATCC® 10211™† on Chocolate Agar.



Haemophilus influenzae Type b ATCC® 10211™† on Blood Agar with GCHI Enrichment.

H

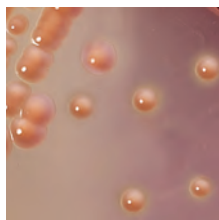
<i>Haemophilus aphrophilus</i> ATCC® 19415™†	See Aggregatibacter aphrophilus ATCC® 19415™† (click here).
<i>Haemophilus aphrophilus</i> ATCC® 33389™†	See Aggregatibacter aphrophilus ATCC® 33389™† (click here).
<i>Haemophilus haemoglobinophilus</i> ATCC® 19416™†	Culti-Loop R4603795
<i>Haemophilus haemolyticus</i> ATCC® 33390™†	Culti-Loop R4603790
<i>Haemophilus influenzae</i> ATCC® 19418™†	Culti-Loop R4603851
<i>Haemophilus influenzae</i> ATCC® 33930™† Beta-lactamase positive.	Culti-Loop R4603903
<i>Haemophilus influenzae</i> ATCC® 35056™† Beta-lactamase positive.	Culti-Loop R4603840
<i>Haemophilus influenzae</i> ATCC® 35540™†	Culti-Loop R4609253
<i>Haemophilus influenzae</i> ATCC® 49144™† Beta-lactamase positive.	Culti-Loop R4603801
<i>Haemophilus influenzae</i> ATCC® 49247™† For susceptibility testing quality control.	Culti-Loop R4603830
<i>Haemophilus influenzae</i> ATCC® 49766™† For susceptibility testing quality control.	Culti-Loop R4603806
<i>Haemophilus influenzae</i> NCTC 8468	Culti-Loop R4609391
<i>Haemophilus influenzae</i> Type a ATCC® 9006™†	Culti-Loop R4603805
<i>Haemophilus influenzae</i> Type b ATCC® 10211™† Beta-lactamase negative.	Culti-Loop R4603810
<i>Haemophilus influenzae</i> Type b ATCC® 33533™† Beta-lactamase positive.	Culti-Loop R4603900
<i>Haemophilus influenzae</i> Type c ATCC® 9007™†	Culti-Loop R4603815
<i>Haemophilus parahaemolyticus</i> ATCC® 10014™†	Culti-Loop R4603003
<i>Haemophilus parainfluenzae</i> ATCC® 7901™†	See Aggregatibacter aphrophilus ATCC® 7901™† (click here).
<i>Haemophilus paraphrophilus</i> ATCC® 49146™†	See Aggregatibacter aphrophilus ATCC® 49146™† (click here).
<i>Haemophilus paraphrophilus</i> ATCC® 49917™†	See Aggregatibacter aphrophilus ATCC® 49917™† (click here).

I

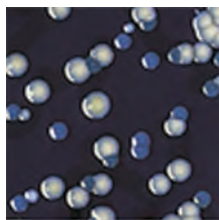
<i>Issatchenkia orientalis</i> ATCC® 6258™†		
	Culti-Loop	R4601520

K

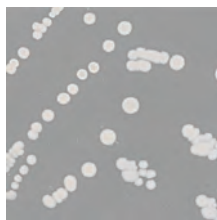
<i>Klebsiella oxytoca</i> ATCC® 8724™†		
	Culti-Loop	R4603009
<i>Klebsiella oxytoca</i> ATCC® 13182™†		
	Culti-Loop	R4603012
<i>Klebsiella oxytoca</i> ATCC® 43086™†		
	Culti-Loop	R4603006
<i>Klebsiella oxytoca</i> ATCC® 49131™†		
	Culti-Loop	R4607019
<i>Klebsiella oxytoca</i> ATCC® 700324™†		
	Culti-Loop	R4603912
<i>Klebsiella pneumoniae</i> C6		
	Culti-Loop	R4603935
<i>Klebsiella pneumoniae</i> subsp. <i>pneumoniae</i> ATCC® 9997™†		
	Culti-Loop	R4603915
<i>Klebsiella pneumoniae</i> subsp. <i>pneumoniae</i> ATCC® 10031™†		
	Culti-Loop	R4603930
<i>Klebsiella pneumoniae</i> subsp. <i>pneumoniae</i> ATCC® 13882™†		
	Culti-Loop	R4607022
<i>Klebsiella pneumoniae</i> subsp. <i>pneumoniae</i> ATCC® 13883™†		
	Culti-Loop	R4607037
<i>Klebsiella pneumoniae</i> subsp. <i>pneumoniae</i> ATCC® 27736™†		
	Culti-Loop	R4607031
<i>Klebsiella pneumoniae</i> subsp. <i>pneumoniae</i> ATCC® 33495™†		
	Culti-Loop	R4607021
<i>Klebsiella pneumoniae</i> subsp. <i>pneumoniae</i> ATCC® 35657™†		
	Culti-Loop	R4603922
<i>Klebsiella pneumoniae</i> subsp. <i>pneumoniae</i> ATCC® 700603™† For Modified Hodge Test. (ESBL)		
	Culti-Loop	R4603074
<i>Klebsiella pneumoniae</i> subsp. <i>pneumoniae</i> ATCC® BAA 1705™† For Modified Hodge Test. (KPC Positive)		
	Culti-Loop	R4609384
<i>Klebsiella pneumoniae</i> subsp. <i>pneumoniae</i> ATCC® BAA 1706™† For Modified Hodge Test. (KPC Negative)		
	Culti-Loop	R4609385



Klebsiella pneumoniae ATCC® 9997™† on MacConkey.



L. pneumophila ATCC® 33152™† (white) and *Tatlockia micdadei* ATCC® 33204™† (blue) on BCYE Differential Agar with BTB, BCP, PAV.



Listeria monocytogenes ATCC® 7644™† on LPM Agar.



Listeria monocytogenes ATCC® 7644™† on Blood Agar (TSA with Sheep Blood).

<i>Kloeckera apiculata</i> var. <i>apis</i> ATCC® 32857™†		
	Culti-Loop	R4600397
<i>Kloeckera japonica</i> ATCC® 58370™†		
	Culti-Loop	R4609398
<i>Kocuria kristinae</i> ATCC® BAA-752™†		
	Culti-Loop	R4603441
<i>Kocuria rhizophila</i> ATCC® 533™†		
	Culti-Loop	R4604070
<i>Kocuria rhizophila</i> ATCC® 9341™†		
	Culti-Loop	R4604075
<i>Kocuria rosea</i> ATCC® 186™†		
	Culti-Loop	R4603440

L

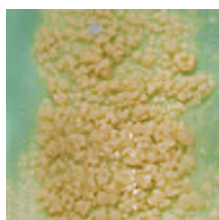
<i>Lactobacillus acidophilus</i> ATCC® 314™†		
	Culti-Loop	R4603050
<i>Lactobacillus acidophilus</i> ATCC® 4356™†		
	Culti-Loop	R4603007
<i>Lactobacillus brevis</i> ATCC® 8287™†		
	Culti-Loop	R4603053
<i>Lactobacillus casei</i> ATCC® 393™†		
	Culti-Loop	R4603008
<i>Lactobacillus delbrueckii</i> subsp. <i>lactis</i> ATCC® 12315™†		
	Culti-Loop	R4603100
<i>Lactobacillus gasseri</i> ATCC® 19992™†		
	Culti-Loop	R4603051
<i>Lactobacillus paracasei</i> subsp. <i>paracasei</i> ATCC® BAA-52™†		
	Culti-Loop	R4609378
<i>Lactobacillus plantarum</i> ATCC® 8014™†		
	Culti-Loop	R4603052
<i>Leclercia adecarboxylata</i> ATCC® 23216™†		
	Culti-Loop	R4603926
<i>Leclercia adecarboxylata</i> ATCC® 700325™†		
	Culti-Loop	R4603927
<i>Legionella bozemanii</i>		
	See <i>Fluoribacter bozemanae</i> (click here).	
<i>Legionella dumoffii</i> ATCC® 33279™†		
	See <i>Fluoribacter dumoffii</i> ATCC® 33279™† (click here).	

<i>Legionella mesenteroides</i> subsp. <i>mesenteroides</i> ATCC® 8293™†	Culti-Loop	R4603953
<i>Legionella micdadei</i>	See <i>Tatlockia micdadei</i> (click here).	
<i>Legionella pneumophila</i> ATCC® 33823™†	Culti-Loop	R4603949
<i>Legionella pneumoniae</i> subsp. <i>pneumophila</i> ATCC® 33152	Culti-Loop	R4603950
<i>Listeria grayi</i> ATCC® 25401™†	Culti-Loop	R4603959
<i>Listeria innocua</i> ATCC® 33090™†	Culti-Loop	R4609005
<i>Listeria innocua</i> VC 32293	Culti-Loop	R4603960
<i>Listeria monocytogenes</i> ATCC® 7644™†	Culti-Loop	R4603970
<i>Listeria monocytogenes</i> ATCC® 7646™†	Culti-Loop	R4609316
<i>Listeria monocytogenes</i> ATCC® BAA-751™†	Culti-Loop	R4603971
<i>Lysinibacillus sphaericus</i> ATCC® 4525™†	Culti-Loop	R4601229

M

<i>Malassezia furfur</i> ATCC® 14521™†	Culti-Loop	R4605025
<i>Malassezia furfur</i> ST 8036	Culti-Loop	R4604023
<i>Microbacterium liquefaciens</i> ATCC® BAA-1819™†	Culti-Loop	R4609417
<i>Microbacterium paraoxydans</i> ATCC® BAA-1818™†	Culti-Loop	R4609416
<i>Microbacterium testaceum</i> ATCC® 15829™†	Culti-Loop	R4604040
<i>Micrococcus luteus</i> ATCC® 533™†	See <i>Kocuria rhizophila</i> (click here).	
<i>Micrococcus luteus</i> ATCC® 4698™†	Culti-Loop	R4604085
<i>Micrococcus luteus</i> ATCC® 9341™†	See <i>Kocuria rhizophila</i> (click here).	

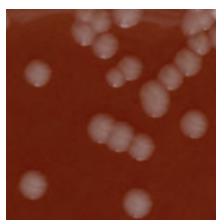
<i>Micrococcus luteus</i> ATCC® 10240™†	Culti-Loop	R4604071
<i>Micrococcus luteus</i> ATCC® 49732™†	Culti-Loop	R4604080
<i>Micrococcus lylae</i> ATCC® 27566™†	Culti-Loop	R4604010
<i>Micrococcus</i> sp. ATCC® 700405™†	Culti-Loop	R4604086
<i>Micromonas micros</i> ATCC® 33270™	See <i>Parvimonas micra</i> ATCC® 33270™† (click here).	
<i>Moraxella catarrhalis</i> ATCC® 8176™†	Culti-Loop	R4601228
<i>Moraxella catarrhalis</i> ATCC® 23246™†	Culti-Loop	R4601236
<i>Moraxella catarrhalis</i> ATCC® 25240™†	Culti-Loop	R4601230
<i>Moraxella catarrhalis</i> ATCC® 25240™†	Culti-Loop	R4601231
<i>Moraxella catarrhalis</i> ATCC® 49143™†	Culti-Loop	R4601227
<i>Moraxella osloensis</i> ATCC® 10973™†	Culti-Loop	R4604020
<i>Moraxella osloensis</i> ATCC® 19976™	Culti-Loop	R4604028
<i>Morganella morganii</i> subsp. <i>morganii</i> ATCC® 25830™†	Culti-Loop	R4604029
<i>Mucor racemosus</i> ATCC® 42647™†	Culti-Loop	R4609440
<i>Mycobacterium fortuitum</i> subsp. <i>fortuitum</i> ATCC® 6841™†	Mycobacti-Loop	R4610012
<i>Mycobacterium intracellulare</i> ATCC® 13950™†	Mycobacti-Loop	R4610010
<i>Mycobacterium kansasii</i> ATCC® 12478™†	Mycobacti-Loop	R4610014
<i>Mycobacterium tuberculosis</i> ATCC® 25177™†	Mycobacti-Loop	R4610020
<i>Myroides odoratus</i> ATCC® 4651™†	Culti-Loop	R4602003



Mycobacterium tuberculosis ATCC® 25177™† on Lowenstein-Jensen Mycobactocel Agar.



Mycobacterium tuberculosis ATCC® 25177™† on Mitchison 7H11 Selective Agar.



Neisseria gonorrhoeae ATCC® 43070™† on Chocolate Agar.

ATCC Licensed Derivative † The ATCC Licensed Derivative Emblem, the ATCC Licensed Derivative word mark, and the ATCC catalog marks are trademarks of ATCC. Remel Inc. is licensed to use these trademarks and to sell products derived from ATCC(R) cultures. The identity, purity, and authenticity of the Licensed Products are exclusively the responsibility of Remel Inc., and not ATCC.

N

<i>Neisseria gonorrhoeae</i> ATCC® 19424^{TM†}	Culti-Loop	R4607041
<i>Neisseria gonorrhoeae</i> ATCC® 31426^{TM†} Beta-lactamase positive.	Culti-Loop	R4607042
<i>Neisseria gonorrhoeae</i> ATCC® 35541^{TM†}	Culti-Loop	R4609235
<i>Neisseria gonorrhoeae</i> ATCC® 43069^{TM†}	Culti-Loop	R4607043
<i>Neisseria gonorrhoeae</i> ATCC® 43070^{TM†}	Culti-Loop	R4607044
<i>Neisseria gonorrhoeae</i> ATCC® 49226^{TM†} For susceptibility testing quality control.	Culti-Loop	R4609006
<i>Neisseria gonorrhoeae</i> ATCC® 49926^{TM†}	Culti-Loop	R4609019
<i>Neisseria gonorrhoeae</i> ATCC® 49981^{TM†} Beta-lactamase positive.	Culti-Loop	R4607075
<i>Neisseria lactamica</i> ATCC® 23970^{TM†}	Culti-Loop	R4607045
<i>Neisseria lactamica</i> ATCC® 23971^{TM†}	Culti-Loop	R4607145
<i>Neisseria lactamica</i> ATCC® 49142^{TM†}	Culti-Loop	R4604027
<i>Neisseria meningitidis</i> serogroup A ATCC® 13077^{TM†}	Culti-Loop	R4607048
<i>Neisseria meningitidis</i> serogroup B ATCC® 13090^{TM†}	Culti-Loop	R4607049
<i>Neisseria meningitidis</i> serogroup C ATCC® 13102^{TM†}	Culti-Loop	R4609007
<i>Neisseria meningitidis</i> serogroup Y ATCC® 35561^{TM†}	Culti-Loop	R4607155
<i>Neisseria mucosa</i> ATCC® 19695^{TM†}	Culti-Loop	R4607150
<i>Neisseria perflava</i> ATCC® 14799^{TM†}	Culti-Loop	R4607046
<i>Neisseria sicca</i> ATCC® 9913^{TM†} (atypical)	Culti-Loop	R4607047

<i>Neisseria sicca</i> ATCC® 29256^{TM†}	Culti-Loop	R4609217
<i>Nocardia asteroides</i> ATCC® 19247^{TM†}	Culti-Loop	R4604111
<i>Nocardia asteroides</i> CL 11014	Culti-Loop	R4609010
<i>Nocardia brasiliensis</i> ATCC® 19296^{TM†}	Culti-Loop	R4609011
<i>Nocardia brasiliensis</i> ATCC® 19297^{TM†}	Culti-Loop	R4604110
<i>Nocardia farcinica</i> ATCC® 3308^{TM†}	Culti-Loop	R4607156

O

<i>Ochrobactrum anthropi</i> ATCC® 49187^{TM†}	Culti-Loop	R4604150
<i>Ochrobactrum anthropi</i> ATCC® 49687^{TM†}	Culti-Loop	R4604151
<i>Ochrobactrum anthropi</i> ATCC® BAA-749^{TM†}	Culti-Loop	R4604152
<i>Oligella ureolytica</i> ATCC® 43534^{TM†}	Culti-Loop	R4604175
<i>Oligella urethralis</i> ATCC® 17960^{TM†}	Culti-Loop	R4604022

P

<i>Paenibacillus gordonae</i> ATCC® 29948^{TM†}	Culti-Loop	R4609381
<i>Paenibacillus macerans</i> ATCC® 8509^{TM†}	Culti-Loop	R4601237
<i>Paenibacillus polymyxa</i> ATCC® 842^{TM†}	Culti-Loop	R4601235
<i>Paenibacillus polymyxa</i> ATCC® 7070^{TM†}	Culti-Loop	R4604600
<i>Paenibacillus polymyxa</i> ATCC® 43865^{TM†}	Culti-Loop	R4601234



Nocardia asteroides CL 11014 on Sabouraud Dextrose Agar, Emmons with Chloramphenicol.



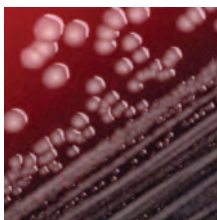
Nocardia brasiliensis ATCC® 19297^{TM†} with positive Urea on Nocardia Quad II.



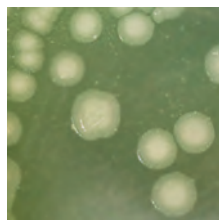
Nocardia brasiliensis ATCC® 19297^{TM†} with positive Tyrosine on Nocardia Quad.

<i>Parabacteroides distasonis</i> ATCC® 8503™†	Culti-Loop	R4601226
<i>Parabacteroides distasonis</i> ATCC® BAA-1295™†	Culti-Loop	R4609377
<i>Parvimonas micra</i> ATCC® 33270™†	Culti-Loop	R4607203
<i>Pasteurella aerogenes</i> ATCC® 27883™†	Culti-Loop	R4607103
<i>Pasteurella multocida</i> subsp. <i>multocida</i> ATCC® 43137™†	Culti-Loop	R4607201
<i>Pediococcus pentosaceus</i> ATCC® 33314™†	Culti-Loop	R4609254
<i>Penicillium chrysogenum</i> ATCC® 10106™†	Culti-Loop	R4607202
<i>Peptoniphilus asaccharolyticus</i> ATCC® 29743™†	Culti-Loop	R4605001
<i>Peptostreptococcus anaerobius</i> ATCC® 27337™†	Culti-Loop	R4607051
<i>Peptostreptococcus micro</i>	See <i>Parvimonas micra</i> (click here).	
<i>Phialophora verrucosa</i> ATCC® 28181™†	Culti-Loop	
<i>Pityrosporum ovale</i> ATCC® 14521™†	See <i>Malassezia furfur</i> ATCC® 14521™† (click here).	
<i>Plesiomonas shigelloides</i> ATCC® 14029™†	Culti-Loop	R4605035
<i>Plesiomonas shigelloides</i> ATCC® 51903™†	Culti-Loop	R4607218
<i>Porphyromonas gingivalis</i> ATCC® 33277™†	Culti-Loop	R4609008
<i>Porphyromonas levii</i> ATCC® 29147™†	Culti-Loop	R4601263
<i>Prevotella melaninogenica</i> ATCC® 25845™†	Culti-Loop	R4601255
<i>Propionibacterium acidipropionici</i> ATCC® 25562™†	Culti-Loop	R4607056
<i>Propionibacterium acnes</i> ATCC® 6919™†	Culti-Loop	R4607101
<i>Propionibacterium acnes</i> ATCC® 11827™†	Culti-Loop	R4607052

<i>Proteus hauseri</i> ATCC® 13315™†	Culti-Loop	R4607057
<i>Proteus mirabilis</i> ATCC® 7002™†	Culti-Loop	R4607053
<i>Proteus mirabilis</i> ATCC® 12453™†	Culti-Loop	R4607059
<i>Proteus mirabilis</i> ATCC® 25933™†	Culti-Loop	R4607061
<i>Proteus mirabilis</i> ATCC® 29245™†	Culti-Loop	R4607054
<i>Proteus mirabilis</i> ATCC® 29906™†	Culti-Loop	R4605055
<i>Proteus mirabilis</i> ATCC® 35659™†	Culti-Loop	R4607077
<i>Proteus mirabilis</i> ATCC® 43071™†	Culti-Loop	R4607073
<i>Proteus vulgaris</i> ATCC® 6380™† OX19 Strain.	Culti-Loop	R4607069
<i>Proteus vulgaris</i> ATCC® 8427™†	Culti-Loop	R4607058
<i>Proteus vulgaris</i> ATCC® 49132™†	Culti-Loop	R4605151
<i>Prototheca wickerhamii</i> ATCC® 16529™†	Culti-Loop	R4608014
<i>Providencia alcalifaciens</i> ATCC® 51902™†	Culti-Loop	R4605169
<i>Providencia stuartii</i> ATCC® 33672™†	Culti-Loop	R4605170
<i>Providencia stuartii</i> ATCC® 49809™†	Culti-Loop	R4605171
<i>Pseudomonas aeruginosa</i> ATCC® 9027™†	Culti-Loop	R4605210
<i>Pseudomonas aeruginosa</i> ATCC® 9721™†	Culti-Loop	R4607068
<i>Pseudomonas aeruginosa</i> ATCC® 10145™†	Culti-Loop	R4607065
<i>Pseudomonas aeruginosa</i> ATCC® 15442™†	Culti-Loop	R4607210
<i>Pseudomonas aeruginosa</i> ATCC® 17934™†	Culti-Loop	R4609208



Pseudomonas aeruginosa ATCC® 9027™† on Blood Agar.



Pseudomonas aeruginosa ATCC® 27853™† on Cetrimide Agar.

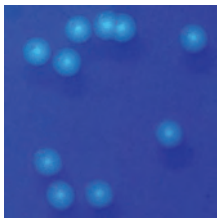
<i>Pseudomonas aeruginosa</i> ATCC® 27853™† For susceptibility testing quality control.	Culti-Loop	R4607060
<i>Pseudomonas aeruginosa</i> ATCC® 35032™†	Culti-Loop	R4607062
<i>Pseudomonas aeruginosa</i> ATCC® 35422™†	Culti-Loop	R4605200
<i>Pseudomonas aeruginosa</i> ATCC® BAA-1744™†	Culti-Loop	R4609392
<i>Pseudomonas fluorescens</i> ATCC® 13525™†	Culti-Loop	R4607216
<i>Pseudomonas putida</i> ATCC® 49128™†	Culti-Loop	R4607074
<i>Pseudomonas stutzeri</i> ATCC® 17588™†	Culti-Loop	R4607211

R

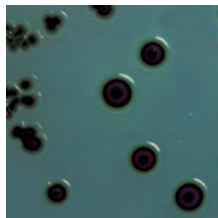
<i>Ralstonia insidiosa</i> ATCC® 49129™†	Culti-Loop	R4605209
<i>Rhizopus stolonifer</i> ATCC® 14037™†	Culti-Loop	R4607212
<i>Rhodococcus equi</i> ATCC® 6939™†	Culti-Loop	R4605400
<i>Rhodotorula glutinis</i> ATCC® 32765™†	Culti-Loop	R4607095

S

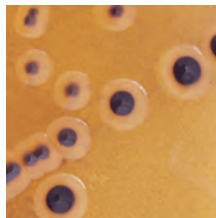
<i>Saccharomyces cerevisiae</i> ATCC® 4098™†	Culti-Loop	R4606900
<i>Saccharomyces cerevisiae</i> ATCC® 9763™†	Culti-Loop	R4608201
<i>Salmonella enterica</i> subsp. <i>enterica</i> serovar <i>Abaetetuba</i> ATCC® 35640™†	Culti-Loop	R4609420
<i>Salmonella enterica</i> subsp. <i>enterica</i> serovar <i>Anatum</i> ATCC® 9270™†	Culti-Loop	R4606006
<i>Salmonella enterica</i> subsp. <i>enterica</i> serovar <i>Choleraesuis</i> ATCC® 10708™†	Culti-Loop	R4609001
<i>Salmonella enterica</i> subsp. <i>enterica</i> serovar <i>Enteritidis</i> ATCC® 13076™†	Culti-Loop	R4608200
<i>Salmonella enterica</i> subsp. <i>enterica</i> serovar <i>Montevideo</i> ATCC® 8387™†	Culti-Loop	R4606004
<i>Salmonella enterica</i> subsp. <i>enterica</i> serovar <i>Newport</i> ATCC® 6962™†	Culti-Loop	R4606005
<i>Salmonella enterica</i> subsp. <i>enterica</i> serovar <i>Paratyphi A</i> ATCC® 11511™†	Culti-Loop	R4606002
<i>Salmonella enterica</i> subsp. <i>enterica</i> serovar <i>Paratyphi B</i> ATCC® 8759™†	Culti-Loop	R4606003
<i>Salmonella enterica</i> subsp. <i>enterica</i> serovar <i>Poona</i> NCTC 4840	Culti-Loop	R4606009
<i>Salmonella enterica</i> subsp. <i>enterica</i> serovar <i>Typhi</i> ATCC® 6539™†	Culti-Loop	R4608203
<i>Salmonella enterica</i> subsp. <i>enterica</i> serovar <i>Typhimurium</i> ATCC® 13311™†	Culti-Loop	R4606100
<i>Salmonella enterica</i> subsp. <i>enterica</i> serovar <i>Typhimurium</i> ATCC® 14028™†	Culti-Loop	R4606000
<i>Salmonella</i> sp. not <i>Typhi</i> group D BF-SD	Culti-Loop	4608202
<i>Salmonella</i> sp. serovar <i>Abony</i> NCTC 6017	Culti-Loop	R4606007
<i>Salmonella tranoroa</i> NCTC 10252	Culti-Loop	R4606010
<i>Scopulariopsis acremonium</i> ATCC® 58636™†	Culti-Loop	R4608204



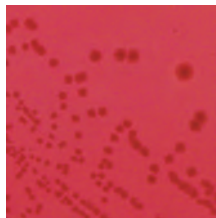
Pseudomonas fluorescens ATCC® 13525™† on *Pseudomonas* F Agar under UV light.



Salmonella enterica subsp. *enterica* serovar *Typhimurium* ATCC® 14028™† on HE Agar.



Salmonella enterica subsp. *enterica* serovar *Typhimurium* ATCC® 14028™† on SS Agar.



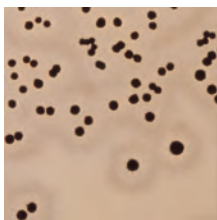
Shigella flexneri serovar 2b group B ATCC® 12022™† on XLD Agar.



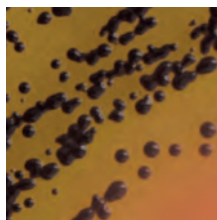
Shigella sonnei group D ATCC® 9290™† on SS Agar.

Serratia liquefaciens ATCC® 27592™†	Culti-Loop	R4608000
Serratia marcescens ATCC® 8100™†	Culti-Loop	R4608001
Serratia marcescens ATCC® 13880™†	Culti-Loop	R4608002
Serratia marcescens ATCC® 14756™†	Culti-Loop	R4609004
Serratia odorifera ATCC® 33077™†	Culti-Loop	R4602000
Shewanella putrefaciens ATCC® 8071™†	Culti-Loop	R4607071
Shewanella putrefaciens ATCC® 49138™†	Culti-Loop	R4601004
Shigella boydii serovar 1 group C ATCC® 9207™†	Culti-Loop	R4608110
Shigella dysenteriae group A ATCC® 13313™†	Culti-Loop	R4608115
Shigella flexneri serovar 2b group B ATCC® 12022™†	Culti-Loop	R4608101
Shigella sonnei group D ATCC® 9290™†	Culti-Loop	R4608151
Shigella sonnei group D ATCC® 11060™†	Culti-Loop	R4609255
Shigella sonnei group D ATCC® 25931™†	Culti-Loop	R4608150
Sphingobacterium multivorum ATCC® 35656™†	Culti-Loop	R4602004
Sphingobacterium spiritivorum ATCC® 33861™†	Culti-Loop	R4602001
Sporidiobolus salmonicolor ATCC® MYA-4550™†	Culti-Loop	R4609396
Sporothrix schenckii ATCC® 10212™†	Culti-Loop	R4608205
Staphylococcus aureus subsp. aureus ATCC® 6538™†	Culti-Loop	R19334
Staphylococcus aureus subsp. aureus ATCC® 6538™†	Culti-Loop	R4607016
Staphylococcus aureus subsp. aureus ATCC® 6538P™†	Culti-Loop	R4609002
Staphylococcus aureus subsp. aureus ATCC® 9144™†	Culti-Loop	R4609321

Staphylococcus aureus subsp. aureus ATCC® 12600™††	Culti-Loop	R4606507
Staphylococcus aureus subsp. aureus ATCC® 25178™††	Culti-Loop	R4607015
Staphylococcus aureus subsp. aureus ATCC® 25904™††	Culti-Loop	R4607007
Staphylococcus aureus subsp. aureus ATCC® 25923™†† For Kirby Bauer susceptibility testing quality control.	Culti-Loop	R4607010
Staphylococcus aureus subsp. aureus ATCC® 29213™†† For MIC susceptibility testing quality control. Beta-lactamase positive.	Culti-Loop	R4607011
Staphylococcus aureus subsp. aureus ATCC® 29247™††	Culti-Loop	R4607009
Staphylococcus aureus subsp. aureus ATCC® 29737™††	Culti-Loop	R4607026
Staphylococcus aureus subsp. aureus ATCC® 33591™†† MRSA.	Culti-Loop	R4607003
Staphylococcus aureus subsp. aureus ATCC® 33592™†† MRSA.	Culti-Loop	R4607020
Staphylococcus aureus subsp. aureus ATCC® 33862™†† For CAMP test.	Culti-Loop	R4607008
Staphylococcus aureus subsp. aureus ATCC® 35548™	Culti-Loop	R4609446
Staphylococcus aureus subsp. aureus ATCC® 43300™†† MRSA.	Culti-Loop	R4609022
Staphylococcus aureus subsp. aureus ATCC® 49444™††	Culti-Loop	R4609023
Staphylococcus aureus subsp. aureus ATCC® 49476™††	Culti-Loop	R4606510
Staphylococcus aureus subsp. aureus ATCC® 51153™††	Culti-Loop	R4606508
Staphylococcus aureus subsp. aureus ATCC® 700699™††	Culti-Loop	R4609411
Staphylococcus aureus subsp. aureus ATCC® BAA-976™†† D-test Negative	Culti-Loop	R4606512
Staphylococcus aureus subsp. aureus ATCC® BAA-977™†† D-test Positive	Culti-Loop	R4606513
Staphylococcus aureus ATCC® BAA-1026™††	Culti-Loop	R4601026
Staphylococcus aureus ATCC® BAA-1708™††	Culti-Loop	R4609389



Staphylococcus aureus ATCC® 25923™†† on Baird-Parker Agar.



Staphylococcus aureus ATCC® 25923™†† on Vogel-Johnson Agar.



Staphylococcus aureus ATCC® 25923™†† on Mannitol Salt Agar.



Staphylococcus aureus ATCC® 25923™†† on Thermanuclease Agar with Toulidine Blue.

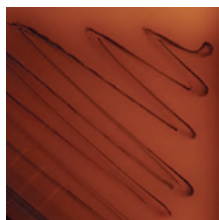


MR-*Staphylococcus aureus* ATCC® 43300™†† on Mueller Hinton Agar with NaCl, Oxacillin.



Staphylococcus saprophyticus ATCC® 15305™†† on Blood Agar.

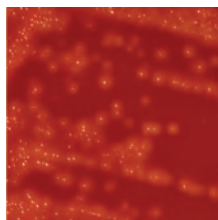
<i>Staphylococcus capitis</i> subsp. <i>capitis</i> ATCC® 35661™†	Culti-Loop	R4608207
<i>Staphylococcus epidermidis</i> ATCC® 12228™†	Culti-Loop	R4606500
<i>Staphylococcus epidermidis</i> ATCC® 14990™†	Culti-Loop	R4606501
<i>Staphylococcus epidermidis</i> ATCC® 29887™†	Culti-Loop	R4608209
<i>Staphylococcus epidermidis</i> ATCC® 49134™†	Culti-Loop	R4607017
<i>Staphylococcus epidermidis</i> ATCC® 49461™†	Culti-Loop	R4608224
<i>Staphylococcus epidermidis</i> ATCC® 700296™†	Culti-Loop	R4609457
<i>Staphylococcus epidermidis</i> ATCC® 700296™†	Culti-Loop	R4609457
<i>Staphylococcus haemolyticus</i> ATCC® 29970™†	Culti-Loop	R4608210
<i>Staphylococcus hominis</i> ATCC® 27844™†	Culti-Loop	R4608211
<i>Staphylococcus lentus</i> ATCC® 700403™†	Culti-Loop	R4606511
<i>Staphylococcus lugdunensis</i> ATCC® 700328™†	Culti-Loop	R4608229
<i>Staphylococcus saprophyticus</i> ATCC® 15305™†	Culti-Loop	R4607014
<i>Staphylococcus saprophyticus</i> ATCC® 35552™†	Culti-Loop	R4608213
<i>Staphylococcus saprophyticus</i> ATCC® 43867™†	Culti-Loop	R4608223
<i>Staphylococcus saprophyticus</i> ATCC® 49453™†	Culti-Loop	R4608214
<i>Staphylococcus saprophyticus</i> ATCC® 49907™†	Culti-Loop	R4609020
<i>Staphylococcus saprophyticus</i> ATCC® BAA-750™†	Culti-Loop	R4607029
<i>Staphylococcus sciuri</i> subsp. <i>sciuri</i> ATCC® 29060™†	Culti-Loop	R4607012
<i>Staphylococcus sciuri</i> subsp. <i>sciuri</i> ATCC® 29061™†	Culti-Loop	R4608230
<i>Staphylococcus simulans</i> ATCC® 27851™†	Culti-Loop	R4607013
<i>Staphylococcus xylosus</i> ATCC® 29967™†	Culti-Loop	R4606504
<i>Staphylococcus xylosus</i> ATCC® 29971™†	Culti-Loop	R4606502
<i>Staphylococcus xylosus</i> ATCC® 35663™†	Culti-Loop	R4606505
<i>Staphylococcus xylosus</i> ATCC® 49148™†	Culti-Loop	R4607018
<i>Staphylococcus xylosus</i> ATCC® 700404™†	Culti-Loop	R4606506
<i>Stenotrophomonas maltophilia</i> ATCC® 13637™†	Culti-Loop	R4607067
<i>Stenotrophomonas maltophilia</i> ATCC® 17666™†	Culti-Loop	R4607072
<i>Stenotrophomonas maltophilia</i> ATCC® 49130™†	Culti-Loop	R4609009
<i>Stenotrophomonas maltophilia</i> ATCC® 51331™†	Culti-Loop	R4607064
<i>Streptococcus agalactiae</i> group B ATCC® 12386™†	Culti-Loop	R4607027
<i>Streptococcus agalactiae</i> group B ATCC® 13813™†	Culti-Loop	R4608250
<i>Streptococcus agalactiae</i> group B CL 810	Culti-Loop	R4607005
<i>Streptococcus bovis</i> ATCC® 33317™†	Culti-Loop	R4609454
<i>Streptococcus bovis</i> ATCC® 49133™†	See <i>Streptococcus pasteurianus</i> ATCC® 49133™† (click here).	
<i>Streptococcus bovis</i> ATCC® 49475™†	See <i>Streptococcus gallolyticus</i> subsp. <i>gallolyticus</i> ATCC® 49475™† (click here).	
<i>Streptococcus criceti</i> ATCC® 19642™†	Culti-Loop	R4606902



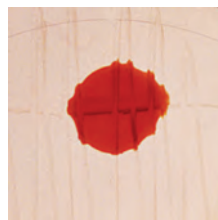
Streptococcus bovis ATCC® 35034™† on Bile Esculin Agar in Strep ID Quad.



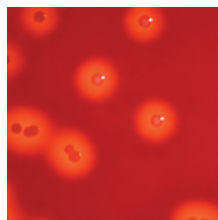
Streptococcus pneumoniae ATCC® 6305™† on Blood Agar.



Streptococcus pyogenes ATCC® group A 19615™† on SXT Blood Agar.



Streptococcus pyogenes ATCC® 19615™† with positive PYR on Strep ID II Triplate.



Streptococcus pyogenes ATCC® group A 12384™† on Strep Isolation Agar.

Quality Control

<i>Streptococcus dysgalactiae</i> subsp. <i>equisimilis</i> ATCC® 9542™†	Culti-Loop	R4608011
<i>Streptococcus dysgalactiae</i> subsp. <i>equisimilis</i> ATCC® 35666™†	Culti-Loop	R4608217
<i>Streptococcus dysgalactiae</i> subsp. <i>equisimilis</i> group C ATCC® 12388™†	Culti-Loop	R4607035
<i>Streptococcus dysgalactiae</i> subsp. <i>equisimilis</i> group G ATCC® 12394™†	Culti-Loop	R4608219
<i>Streptococcus equi</i> subsp. <i>equi</i> ATCC® 9528™†	Culti-Loop	R4601001
<i>Streptococcus equi</i> subsp. <i>zoepidemicus</i> ATCC® 43079™†	Culti-Loop	R4608237
<i>Streptococcus equi</i> subsp. <i>zoepidemicus</i> group C ATCC® 700400™†	Culti-Loop	R4608225
<i>Streptococcus gallolyticus</i> ATCC® 9809™†	Culti-Loop	R4607025
<i>Streptococcus gallolyticus</i> ATCC® 49147™†	Culti-Loop	R4607078
<i>Streptococcus gallolyticus</i> subsp. <i>gallolyticus</i> ATCC® 49475™†	Culti-Loop	R4608175
<i>Streptococcus mutans</i> ATCC® 25175™†	Culti-Loop	R4607001
<i>Streptococcus mutans</i> ATCC® 35668™†	Culti-Loop	R4607002
<i>Streptococcus oralis</i> ATCC® 9811™†	Culti-Loop	R4608220
<i>Streptococcus pasteurianus</i> ATCC® 49133™†	Culti-Loop	R4607079
<i>Streptococcus pneumoniae</i> ATCC® 6301™†	Culti-Loop	R4606909
<i>Streptococcus pneumoniae</i> ATCC® 6303™†	Culti-Loop	R4608221
<i>Streptococcus pneumoniae</i> ATCC® 6305™† For susceptibility testing quality control.	Culti-Loop	R4607024
<i>Streptococcus pneumoniae</i> ATCC® 27336™†	Culti-Loop	R4607033
<i>Streptococcus pneumoniae</i> ATCC® 49136™†	Culti-Loop	R4607004

<i>Streptococcus pneumoniae</i> ATCC® 49150™†	Culti-Loop	R4606901
<i>Streptococcus pneumoniae</i> ATCC® 49619™† For susceptibility testing quality control.	Culti-Loop	R4609015
<i>Streptococcus pneumoniae</i> CL 811	Culti-Loop	R4606700
<i>Streptococcus pyogenes</i> ATCC® 19615™†	Culti-Loop	R4607000
<i>Streptococcus pyogenes</i> group A ATCC® 12384™†	Culti-Loop	R4609242
<i>Streptococcus pyogenes</i> group A ATCC® 21547™†	Culti-Loop	R4609211
<i>Streptococcus salivarius</i> serotype II ATCC® 13419™†	Culti-Loop	R4608222
<i>Streptococcus sanguinis</i> Type 1 ATCC® 10556™†	Culti-Loop	R4607023
<i>Streptococcus</i> sp. group B ATCC® 12401™†	Culti-Loop	R4609453
<i>Streptococcus</i> sp. group D ATCC® 9854™†	Culti-Loop	R4606853
<i>Streptococcus</i> sp. group D ATCC® 27284™†	Culti-Loop	R4607034
<i>Streptococcus</i> sp. Type 2 group F ATCC® 12392™†	Culti-Loop	R4608218
<i>Streptococcus thermophilus</i> ATCC® 19258™†	Culti-Loop	R4608238
<i>Streptococcus uberis</i> ATCC® 9927™†	Culti-Loop	R4607036
<i>Streptococcus uberis</i> ATCC® 700407™†	Culti-Loop	R4608236
<i>Streptomyces albus</i> ATCC® 17900™†	Culti-Loop	R4609024
<i>Streptomyces griseus</i> subsp. <i>griseus</i> ATCC® 10137™†	Culti-Loop	R4609013



† The ATCC Licensed Derivative Emblem, the ATCC Licensed Derivative word mark, and the ATCC catalog marks are trademarks of ATCC. Remel Inc. is licensed to use these trademarks and to sell products derived from ATCC(R) cultures. The identity, purity, and authenticity of the Licensed Products are exclusively the responsibility of Remel Inc., and not ATCC.

T

<i>Tatlockia micdadei</i> ATCC® 33204™†	Culti-Loop	R4609205
<i>Trichophyton equinum</i> ATCC® 12544™†	Culti-Loop	R4608302
<i>Trichophyton mentagrophytes</i> ATCC® 9533™†	Culti-Loop	R4608300
<i>Trichophyton rubrum</i> ATCC® 28188™†	Culti-Loop	R4608301
<i>Trichophyton tonsurans</i> ATCC® 28942™†	Culti-Loop	R4609014
<i>Trichosporon cutaneum</i> ATCC® 28592™†	Culti-Loop	R4608303
<i>Trichosporon mucoides</i> ATCC® 204094™†	Culti-Loop	R4608015

V

<i>Veillonella parvula</i> ATCC® 10790™†	Culti-Loop	R4609200
<i>Vibrio cholerae</i> serotype <i>Inaba</i> ATCC® 9459™†	Culti-Loop	R4609016
<i>Vibrio parahaemolyticus</i> ATCC® 17802™†	Culti-Loop	R4609000
<i>Vibrio vulnificus</i> ATCC® 27562™†	Culti-Loop	R4609017
<i>Virgibacillus pantothenicus</i> ATCC® 14576™†	Culti-Loop	R4609025

Y

<i>Yarrowia lipolytica</i> ATCC® 9773™†	Culti-Loop	R4609003
<i>Yersinia enterocolitica</i> subsp. <i>enterocolitica</i> ATCC® 9610™†	Culti-Loop	R4609018
<i>Yersinia enterocolitica</i> subsp. <i>enterocolitica</i> ATCC® 23715™†	Culti-Loop	R4607076
<i>Yersinia kristensenii</i> ATCC® 33639™†	Culti-Loop	R4609021

Z

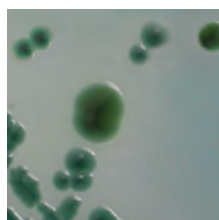
<i>Zygosaccharomyces bailii</i> ATCC® MYA-4549™†	Culti-Loop	R4609397
---	------------	----------



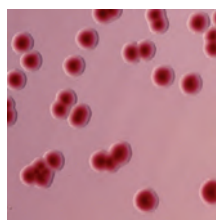
Trichophyton mentagrophytes ATCC® 9533™† on Sabouraud Dextrose Agar, Emmons with Chloramphenicol.



Trichophyton rubrum ATCC® 28188™† on Potato Dextrose Agar.



Vibrio parahaemolyticus ATCC® 17802™† on TCBS Agar.



Yersinia enterocolitica subsp. *enterocolitica* ATCC® 9610™† on Yersinia Selective Agar.



Culti-Loop inoculation of plated medium.

Culti-Loop Rehydration Fluid

Aerobic Set Rehydration Fluid

		R4631000
--	--	----------

Culti-Loop Sets

Each set has 5 Loops/Organism unless indicated.

API™ 20 Strep QC Set/2

Streptococcus equi subsp. *zooepidemicus* group C ATCC® 700400™†
Streptococcus uberis ATCC® 700407™†

	Set	R4653062
--	-----	----------

API 20 Strep Streamlined QC

Streptococcus equi subsp. *zooepidemicus* group C ATCC® 700400™†

	Set	R4608225
--	-----	----------

API 20A Anaerobe System QC Set/3

Bacteroides ovatus ATCC® 8483™†
Clostridium perfringens ATCC® 13124™†
Clostridium sordellii ATCC® 9714™†

	Set	R4653058
--	-----	----------

API 20C Clinical Yeast System QC Set/3

Candida glabrata ATCC® 15126™†
Candida guilliermondii ATCC® 6260™†
Cryptococcus laurentii ATCC® 18803™†

	Set	R4653059
--	-----	----------

API 20C Clinical Yeast Streamlined QC

<i>Candida glabrata</i> ATCC® 15126™†		R4601513
<i>Cryptococcus laurentii</i> ATCC® 18803™†		R4601241

API 20E QC Set/5

Enterobacter cloacae ATCC® 13047™†
Escherichia coli ATCC® 25922™†
Klebsiella pneumoniae subsp. *pneumoniae* ATCC® 35657™†
Proteus mirabilis ATCC® 35659™†
Stenotrophomonas maltophilia ATCC® 51331™†

	Set	R4651003
--	-----	----------

API 20E Streamlined QC

Proteus mirabilis ATCC® 35659™†

	Set	R4651003
--	-----	----------

API 20NE QC Set/4

Acaligenes faecalis subsp. *faecalis* ATCC® 35655™†
Aeromonas hydrophila ATCC® 35654™†
Pseudomonas aeruginosa ATCC® 27853™†
Sphingobacterium multivorum ATCC® 35656™†

	Set	R4653064
--	-----	----------

API 50CHB QC Set/1

Paenibacillus polymyxa ATCC® 43865™†

		R4601234
--	--	----------

API Coryne QC Set/3

Cellulosimicrobium cellulans ATCC® 27402™†
Corynebacterium renale ATCC® 19412™†
Microbacterium testaceum ATCC® 15829™†

	Set	R4653063
--	-----	----------

API Coryne Streamlined QC

Corynebacterium renale ATCC® 14912™†

	Set	R4601906
--	-----	----------

API NH QC Set/3

Haemophilus influenzae Type b ATCC® 10211™†
Haemophilus paraphrophilus ATCC® 49917™†
Neisseria gonorrhoeae ATCC® 31426™†

	Set	R4653070
--	-----	----------

API NH Streamlined QC

Neisseria gonorrhoeae ATCC® 31426™†

	Set	R4607042
--	-----	----------

API Rapid 20E QC Set/3

Escherichia coli ATCC® 11775™†
Klebsiella pneumoniae subsp. *pneumoniae* ATCC® 35657™†
Proteus hauseri ATCC® 13315™†

	Set	R4653061
--	-----	----------

API Staph QC Set/3

Staphylococcus capitis subsp. *capitis* ATCC® 35661™†
Staphylococcus lentus ATCC® 700403™†
Staphylococcus xylosus ATCC® 700404™†

	Set	R4653065
--	-----	----------

API Staph Streamlined QC

Staphylococcus capitis subsp. *capitis* ATCC® 35661™†

	Set	R4608207
--	-----	----------

BBL Crystal ID Systems Enteric/Nonfermenter QC Set/6

Acinetobacter lwoffii ATCC® 17925™†
Enterobacter cloacae ATCC® 35030™†
Escherichia coli ATCC® 25922™†
Klebsiella pneumoniae subsp. *pneumoniae* ATCC® 33495™†
Proteus vulgaris ATCC® 8427™†
Pseudomonas aeruginosa ATCC® 35032™†

	Set	R4655021
--	-----	----------

CLIA '88 Compliance Bacitracin Test QC Set/2

Streptococcus agalactiae ATCC® 12386™†
Streptococcus pyogenes ATCC® 19615™†

	Set	R4651100
--	-----	----------

CLIA '88 Compliance Beta-lactamase Test QC Set/2

Neisseria gonorrhoeae ATCC® 31426™†
Neisseria gonorrhoeae ATCC® 43069™†

	Set	R4651109
--	-----	----------

CLIA '88 Compliance Catalase Test QC Set/2

Staphylococcus aureus subsp. *aureus* ATCC® 25923™†
Staphylococcus pyogenes ATCC® 19615™†

	Set	R4651104
--	-----	----------

CLIA '88 Compliance Coagulase Test QC Set/2

Staphylococcus aureus subsp. *aureus* ATCC® 25923™†
Staphylococcus epidermidis ATCC® 12228™†

	Set	R4651106
--	-----	----------

CLIA '88 Compliance Kirby Bauer Susceptibility QC Set/3

(Mueller Hinton) 10 Loops/Organism.
Escherichia coli ATCC® 25922™†
Pseudomonas aeruginosa ATCC® 27853™†
Staphylococcus aureus subsp. *aureus* ATCC® 25923™†

	Set	R4651101
--	-----	----------

CLIA '88 Compliance Novobiocin Test QC Set/2

Staphylococcus epidermidis ATCC® 12228™†
Staphylococcus saprophyticus ATCC® 49453™†

	Set	R4651110
--	-----	----------

CLIA '88 Compliance Optochin Test QC Set/2

Streptococcus pneumoniae ATCC® 6305™†
Streptococcus sanguis Type 1 ATCC® 10556™†

	Set	R4651108
--	-----	----------

CLIA '88 Compliance Oxidase Test QC Set/2

Escherichia coli ATCC® 25922™†
Neisseria gonorrhoeae ATCC® 43069™†

	Set	R4651103
--	-----	----------

CLIA '88 Compliance Selective Neisseria Media Performance Testing QC Set/3

Neisseria gonorrhoeae ATCC® 43069™†
Proteus mirabilis ATCC® 43071™†
Staphylococcus epidermidis ATCC® 12228™†

	Set	R4651102
--	-----	----------

Kirby Bauer Susceptibility QC Set/4

Escherichia coli ATCC® 25922™†
Escherichia coli ATCC® 35218™†
Pseudomonas aeruginosa ATCC® 27853™†
Staphylococcus aureus subsp. *aureus* ATCC® 25923™†

	Set	R4653004
--	-----	----------

MicroScan Gram-Negative QC 4 Set/6

Escherichia coli ATCC® 25922™†
Escherichia coli ATCC® 35218™†
Klebsiella oxytoca ATCC® 49131™†
Klebsiella pneumoniae ATCC® 700603™†
Proteus vulgaris ATCC® 49132™†
Pseudomonas aeruginosa ATCC® 22853™†

	Set	R4661000
--	-----	----------

MicroScan Gram-Positive QC Set/8

Enterococcus faecalis ATCC® 29212™†
Enterococcus faecalis ATCC® 51299™†
Escherichia coli ATCC® 35218™†
Micrococcus luteus ATCC® 49732™†
Staphylococcus aureus subsp. *aureus* ATCC® 29213™†
Staphylococcus aureus subsp. *aureus* ATCC® 43300™†
Staphylococcus aureus subsp. *aureus* ATCC® BAA-977™†
Streptococcus gallolyticus ATCC® 49147™†

	Set	R4661001
--	-----	----------

MicroScan HNID QC Set/4

Aggregatibacter aphrophilus ATCC® 49146™†
Haemophilus influenzae ATCC® 49144™†
Moraxella catarrhalis ATCC® 49143™†
Neisseria lactamica ATCC® 49142™†

	Set	R4661004
--	-----	----------

MicroScan Rapid Anaerobe ID QC Set/4

Bacteroides fragilis ATCC® 25285™†
Clostridium perfringens ATCC® 13124™†
Clostridium sordellii ATCC® 9714™†
Finexgoldia magna ATCC® 29328™†

	Set	R4661003
--	-----	----------

MicroScan Rapid Gram-Negative QC Set/5

Acinetobacter sp. ATCC® 49139™†
Acinetobacter sp. ATCC® 49466™†
Escherichia coli ATCC® 25922™†
Klebsiella oxytoca ATCC® 49131™†
Shewanella putrefaciens ATCC® 49138™†

	Set	R4661002
--	-----	----------

MicroScan Rapid Yeast ID QC Set/7

Candida albicans ATCC® 66027™†
Candida glabrata ATCC® 66032™†
Candida kefyr subsp. *aureus* ATCC® 66028™†
Candida tropicalis ATCC® 66029™†
Cryptococcus albidus ATCC® 66030™†
Cryptococcus neoformans ATCC® 66031™†
Cryptococcus uniguttulatus ATCC® 66033™†

	Set	R4661005
--	-----	----------

RapID ANA II QC Set/3

Bacteroides uniformis ATCC® 8492™†
Clostridium sordellii ATCC® 9714™†
Parabacteroides distasonis ATCC® 8503™†

	Set	R4653050
--	-----	----------

RapID CB PLUS QC Set/3

Arcanobacterium pyogenes ATCC® 19411™†
Corynebacterium pseudodiphtheriticum ATCC® 10701™†
Paenibacillus polymyxa ATCC® 842™†

	Set	R4653048
--	-----	----------

RapID NF PLUS QC Set/4

Acinetobacter baumannii ATCC® 19606™†
Aeromonas hydrophila ATCC® 35654™†
Elizabethkingia meningoseptica ATCC® 13253™†
Oligella ureolytica ATCC® 43534™†

	Set	R4653054
--	-----	----------

RapID NH QC Set/4

Aggregatibacter aphrophilus ATCC® 49146™†
Haemophilus influenzae Type a ATCC® 9006™†
Moraxella catarrhalis ATCC® 8176™†
Oligella urethralis ATCC® 17960™†

	Set	R4653051
--	-----	----------

RapID ONE QC Set/4

Enterobacter aerogenes ATCC® 13048™†
Escherichia coli ATCC® 25922™†
Proteus vulgaris ATCC® 6380™†
Pseudomonas aeruginosa ATCC® 27853™†

	Set	R4653056
--	-----	----------

RapID SS/u QC Set/5

Enterococcus faecalis ATCC® 29212™†
Escherichia coli ATCC® 25922™†
Klebsiella pneumoniae subsp. *pneumoniae* ATCC® 13883™†
Proteus mirabilis ATCC® 25933™†
Serratia marcescens ATCC® 8100™†

	Set	R4653053
--	-----	----------

RapID STAPH PLUS QC Set/4

Enterobacter aerogenes ATCC® 13048™†
Oligella ureolytica ATCC® 43534™†
Staphylococcus haemolyticus ATCC® 29970™†
Staphylococcus saprophyticus ATCC® 35552™†

	Set	R4653047
--	-----	----------

RapID STR QC Set/4

Enterococcus durans ATCC® 11576™†
Enterococcus faecalis ATCC® 29212™†
Streptococcus gallolyticus ATCC® 9809™†
Streptococcus pyogenes ATCC® 19615™†

	Set	R4653052
--	-----	----------

RapID YEAST PLUS QC Set/5

Candida albicans ATCC® 14053™†
Candida glabrata ATCC® 2001™†
Candida kefyr ATCC® 2512™†
Cryptococcus laurentii ATCC® 66036™†
Yarrowia lipolytica ATCC® 9773™†

	Set	R4653060
--	-----	----------

Sensititre Anaerobe MIC Susceptibility QC Set/5

Bacteroides fragilis ATCC® 25285™†
Bacteroides thetaiotaomicron ATCC® 29741™†
Eggerthella lenta ATCC® 43055™†

	Set	R4687021
--	-----	----------

Sensititre Aquaculture MIC QC Set/2

Aeromonas salmonicida subsp. *salmonicida* ATCC® 33658™†
Escherichia coli ATCC® 25922™†

	Set	R4687022
--	-----	----------

Sensititre Automated Gram Negative QC Set/6

Edwardsiella tarda ATCC® 15947™†
Klebsiella oxytoca ATCC® 8724™†
Morganella morganii subsp. *morganii* ATCC® 25830™†
Proteus vulgaris ATCC® 6896™†
Pseudomonas aeruginosa ATCC® 10145™†
Shigella sonnei ATCC® 25931™†

	Set	R4687023
--	-----	----------

Sensititre GPID ID QC Set/5

Enterococcus faecalis ATCC® 29212™†
Escherichia coli ATCC® 25922™†
Kocuria rosea ATCC® 186™†
Pseudomonas aeruginosa ATCC® 27853™†
Staphylococcus epidermidis ATCC® 700296™†

	Set	R4687024
--	-----	----------

Sensititre H. influenzae/S. pneumoniae MIC QC Set/3

Haemophilus influenzae ATCC® 49247™†
Haemophilus influenzae ATCC® 49766™†
Streptococcus pneumoniae ATCC® 49619™†

	Set	R4687025
--	-----	----------

Sensititre MIC Breakpoint Plates/Just One Strips QC Set/5

Enterococcus faecalis ATCC® 29212™†
Escherichia coli ATCC® 25922™†
Escherichia coli ATCC® 35218™†
Pseudomonas aeruginosa ATCC® 27853™†
Staphylococcus aureus subsp. *aureus* ATCC® 29213™†

	Set	R4657020
--	-----	----------

Sensititre MIC Breakpoint QC Set/5

Enterococcus faecalis ATCC® 29212™†
Escherichia coli ATCC® 25922™†
Escherichia coli ATCC® 35218™†
Pseudomonas aeruginosa ATCC® 27853™†
Staphylococcus aureus subsp. *aureus* ATCC® 29213™†

	Set	R4687020
--	-----	----------

Sensititre MIC Susceptibility QC Set/9

Enterococcus faecalis ATCC® 29212™†
Enterococcus faecalis ATCC® 51299™†
Escherichia coli ATCC® 25922™†
Escherichia coli ATCC® 35218™†
Klebsiella pneumoniae subsp. *pneumoniae* ATCC® 700603™†
Pseudomonas aeruginosa ATCC® 27853™†
Staphylococcus aureus subsp. *aureus* ATCC® 29213™†
Staphylococcus aureus subsp. *aureus* ATCC® BAA-976™†
Staphylococcus aureus subsp. *aureus* ATCC® BAA-977™†

	Set	R4687026
--	-----	----------

Sensititre YeastOne QC Set/2

Candida parapsilosis ATCC® 22019™†
Issatchenkia orientalis ATCC® 6258™†

	Set	R4687027
--	-----	----------

Shigella Grouping QC Set/4

Shigella boydii serovar 1 group C ATCC® 9207™†
Shigella dysenteriae group A ATCC® 13313™†
Shigella flexneri serovar 2b group B ATCC® 12022™†
Shigella sonnei group D ATCC® 25931™†

	Set	R4659100
--	-----	----------

Vitek GNI+ QC Set/8

Bordetella bronchiseptica ATCC® 10580™†
Burkholderia cepacia ATCC® 25608™†
Klebsiella pneumoniae subsp. *pneumoniae* ATCC® 13883™†
Leclercia adecarboxylata ATCC® 23216™†
Plesiomonas shigelloides ATCC® 51903™†
Proteus mirabilis ATCC® 7002™†
Providencia alcalifaciens ATCC® 51902™†
Serratia liquefaciens ATCC® 27592™†

	Set	R4652014
--	-----	----------

Vitek GPI QC Set/7

Enterococcus durans ATCC® 6056™†
Enterococcus faecalis ATCC® 29212™†
Erysipelothrix rhusiopathiae ATCC® 19414™†
Staphylococcus xylosus ATCC® 29971™†
Streptococcus equi subsp. *equi* ATCC® 9528™†
Streptococcus gallolyticus ATCC® 9809™†
Streptococcus pyogenes ATCC® 19615™†

	Set	R4652010
--	-----	----------

Vitek GPS Susceptibility QC Set/4

Enterococcus faecalis ATCC® 29212™†
Enterococcus faecalis ATCC® 51299™†
Escherichia coli ATCC® 35218™†
Staphylococcus aureus subsp. *aureus* ATCC® 29213™†

	Set	R4652008
--	-----	----------

Vitek NHI QC Set/6

Aggregatibacter aphrophilus ATCC® 7901™†
Haemophilus influenzae Type a ATCC® 9006™†
Moraxella catarrhalis ATCC® 25238™†
Neisseria gonorrhoeae ATCC® 49981™†
Neisseria lactamica ATCC® 23970™†
Neisseria meningitidis serogroup C ATCC® 13102™†

	Set	R4652006
--	-----	----------

Vitek 2 ANC 21347 QC Set/7

Bacteroides ovatus ATCC® BAA-1296™†
Bacteroides vulgatus ATCC® 8482™†
Clostridium perfringens ATCC® 13124™†
Clostridium septicum ATCC® 12464™†
Clostridium sordellii ATCC® 9714™†
Corynebacterium striatum ATCC® BAA-1293™†
Parabacteroides distasonis ATCC® BAA-1295™†

	Set	R4652030
--	-----	----------

Vitek 2 ANC Streamlined QC

<i>Bacteroides ovatus</i> ATCC® BAA-1296™†	R4609374
<i>Clostridium septicum</i> ATCC® 12464™	R4601650

Vitek 2 AST-GN QC Set/4

Escherichia coli ATCC® 25922™†
Escherichia coli ATCC® 35218™†
Klebsiella pneumoniae subsp. *pneumoniae* ATCC® 700603™†
Pseudomonas aeruginosa ATCC® 27853™†

	Set	R4652018
--	-----	----------

Vitek 2 AST-GP QC Set/7

Enterococcus faecalis ATCC® 29212™†
Enterococcus faecalis ATCC® 51299™†
Staphylococcus aureus subsp. *aureus* ATCC® 29213™†
Staphylococcus aureus subsp. *aureus* ATCC® BAA-976™†
Staphylococcus aureus subsp. *aureus* ATCC® BAA-977™†
Staphylococcus aureus subsp. *aureus* ATCC® BAA-1026™†
Streptococcus pneumoniae ATCC® 49619™†

	Set	R4652019
--	-----	----------

Vitek 2 AST-YS QC

<i>Issatchenkia orientalis</i> ATCC® 6258™†	R4601520
<i>Candida parapsilosis</i> ATCC® 22019™†	R4601518

Vitek 2 BCL 21345 QC Set/12

Aneurinibacillus aneurinilyticus ATCC® 11376™†
Bacillusadius ATCC® 14574™†
Bacillus circulans ATCC® 61™†
Bacillus megaterium ATCC® 14581™†
Bacillus pumilus ATCC® BAA-1434™†
Brevibacillus agri ATCC® 51663™†
Brevibacillus laterosporus ATCC® 64™†
Enterobacter aerogenes ATCC® 13048™†
Paenibacillus gordonae ATCC® 29948™†
Paenibacillus macerans ATCC® 8509™†
Paenibacillus polymyxa ATCC® 7070™†
Staphylococcus epidermidis ATCC® 12228™†

	Set	R4652023
--	-----	----------

Vitek 2 CBC Comprehensive QC Set/11

Arcanobacterium haemolyticum ATCC® BAA-1784™†
Cellulosimicrobium cellulans ATCC® BAA-1816™†
Cellulosimicrobium cellulans ATCC® BAA-1817™†
Corynebacterium renale ATCC® BAA-1785™†
Corynebacterium urealyticum ATCC® 43044™†
Curtobacterium pusillum ATCC® 19096™†
Klebsiella oxytoca ATCC® 700324™†
Microbacterium liquefaciens ATCC® BAA-1819™†
Microbacterium paraoxydans ATCC® BAA-1818™†
Microbacterium testaceum ATCC® 15829™†
Ochrobactrum anthropi ATCC® BAA-749™†

	Set	R4652031
--	-----	----------

Vitek 2 GN 21341 QC Set/10

Acinetobacter baumannii ATCC® BAA-747™†
Elizabethkingia meningoseptica ATCC® 13253™†
Enterobacter hormaechei ATCC® 700323™†
Klebsiella oxytoca ATCC® 700324™†
Ochrobactrum anthropi ATCC® BAA-749™†
Proteus vulgaris ATCC® 6380™†
Pseudomonas aeruginosa ATCC® 9721™†
Pseudomonas aeruginosa ATCC® BAA-1744™†
Shigella sonnei group D ATCC® 25931™†
Stenotrophomonas maltophilia ATCC® 17666™†

	Set	R4652021
--	-----	----------

Vitek 2 GN Streamlined QC

<i>Enterobacter hormaechei</i> ATCC® 700323™†	R4607094
<i>Stenotrophomonas maltophilia</i> ATCC® 17666™†	R4607072

Vitek 2 GP 21342 QC Set/9

<i>Enterococcus casseliflavus</i> ATCC® 700327™†	
<i>Enterococcus saccharolyticus</i> ATCC® 43076™†	
<i>Kocuria kristinae</i> ATCC® BAA-752™†	
<i>Listeria monocytogenes</i> ATCC® BAA-751™†	
<i>Staphylococcus saprophyticus</i> ATCC® BAA-750™†	
<i>Staphylococcus sciuri</i> subsp. <i>sciuri</i> ATCC® 29061™†	
<i>Streptococcus equi</i> subsp. <i>zooepidemicus</i> ATCC® 43079™†	
<i>Streptococcus pneumoniae</i> ATCC® 49619™†	
<i>Streptococcus thermophilus</i> ATCC® 19258™†	

Set	R4652020
-----	----------

Vitek 2 GP Streamlined QC

<i>Enterococcus casseliflavus</i> ATCC® 700327™†	R4607099
<i>Staphylococcus saprophyticus</i> ATCC® BAA-750™†	R4607029

Vitek 2 NH 21346 QC Set/9

<i>Aggregatibacter aphrophilus</i> ATCC® 33389™†	
<i>Eikenella corrodens</i> ATCC® BAA-1152™†	
<i>Enterobacter aerogenes</i> ATCC® 13048™†	
<i>Haemophilus influenzae</i> ATCC® 9007™†	
<i>Neisseria gonorrhoeae</i> ATCC® 19424™†	
<i>Neisseria lactamica</i> ATCC® 23970™†	
<i>Oligella urethralis</i> ATCC® 17960™†	
<i>Paenibacillus polymyxa</i> ATCC® 7070™†	
<i>Staphylococcus epidermidis</i> ATCC® 12228™†	

Set	R4652024
-----	----------

Vitek 2 NH Streamlined QC

<i>Eikenella corrodens</i> ATCC® BAA-1152™†	R4601947
---	----------



Quanti-Cult.



Quanti-Cult inoculation of Bismuth Sulfite plate.

Vitek 2 YST 21343 QC Set/11

<i>Candida albicans</i> ATCC® 14053™†	
<i>Candida glabrata</i> ATCC® MYA-2950™†	
<i>Candida lusitanae</i> ATCC® 34499™†	
<i>Candida utilis</i> ATCC® 9950™†	
<i>Kloeckera japonica</i> ATCC® 58370™†	
<i>Oligella ureolytica</i> ATCC® 43534™†	
<i>Prototheca wickerhamii</i> ATCC® 16529™†	
<i>Sporidiobolus salmonicolor</i> ATCC® MYA-4550™†	
<i>Staphylococcus epidermidis</i> ATCC® 12228™†	
<i>Trichosporon mucoides</i> ATCC® 204094™†	
<i>Zygosaccharomyces bailii</i> ATCC® MYA-4549™†	

Set	R4652022
-----	----------

Vitek 2 Yeast Streamlined QC

<i>Candida albicans</i> ATCC® 14053™†	R4601501
---------------------------------------	----------

CFUrine Kit Quality Control

Quality control for determination of urine colony counts for dipslides, tube screening methods and calibrated loops. Film of preserved microorganisms on inside of cap on plastic vial ready for rehydration. Contents: 1 preserved organism vial with high CFU count; 1 preserved organism vial with low CFU count; 2 rehydration vials; 2 × 99mL dilution blanks.

<i>Escherichia coli</i> ATCC® 25922™†	Kit	R4701000
<i>Proteus mirabilis</i> ATCC® 12453™†	Kit	R4702000
<i>Staphylococcus aureus</i> subsp. <i>aureus</i> ATCC® 25923™†	Kit	R4703000

Quanti-Cult

Film of preserved microorganisms on inside of cap on a plastic vial, ready for rehydration and use in quality control procedures. No serial dilution required. Delivers <100 colony forming units (CFUs) in a single 0.3mL inoculum. 1 test/reconstituted vial; 10 tests/kit. Contents: 10 preserved organism vials and 10 rehydration vials.

<i>Aspergillus brasiliensis</i> ATCC® 16404™†	10 Tests/Kit	R4731100
<i>Bacillus subtilis</i> ATCC® 6633™†	10 Tests/Kit	R4731221
<i>Candida albicans</i> ATCC® 10231™†	10 Tests/Kit	R4731503
<i>Clostridium sporogenes</i> ATCC® 11437™†	10 Tests/Kit	R4731703
<i>Escherichia coli</i> ATCC® 8739™†	10 Tests/Kit	R4737085
<i>Escherichia coli</i> ATCC® 25922™†	10 Tests/Kit	R4737050
<i>Pseudomonas aeruginosa</i> ATCC® 9027™†	10 Tests/Kit	R4735210
<i>Pseudomonas aeruginosa</i> ATCC® 27853™†	10 Tests/Kit	R4737060

ATCC Licensed Derivative † The ATCC Licensed Derivative Emblem, the ATCC Licensed Derivative word mark, and the ATCC catalog marks are trademarks of ATCC. Remel Inc. is licensed to use these trademarks and to sell products derived from ATCC(R) cultures. The identity, purity, and authenticity of the Licensed Products are exclusively the responsibility of Remel Inc., and not ATCC.

<i>Staphylococcus aureus</i> subsp. <i>aureus</i> ATCC® 6538™†	10 Tests/Kit	R4737016
<i>Staphylococcus aureus</i> subsp. <i>aureus</i> ATCC® 25923™†	10 Tests/Kit	R4737010
<i>Staphylococcus aureus</i> subsp. <i>aureus</i> ATCC® 29737™†	10 Tests/Kit	R4737020
<i>Staphylococcus epidermidis</i> ATCC® 12228™†	10 Tests/Kit	R4736500
Blue Foam Rack	5/Pk.	R4700001

Quanti-Cult Plus

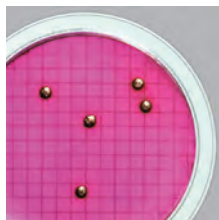
Film of preserved microorganisms on inside of cap on a plastic vial, ready for rehydration and use in quality control procedures. No serial dilution required. Delivers <100 colony forming units (CFUs) in a single 0.1 mL inoculum. 10 test/reconstituted vial; 100 tests/kit. Contents: 10 preserved organism vials and 10 rehydration vials. CFU counts are available on lot-specific certificate of analysis (C of A), available on www.thermofisher.com.

<i>Aspergillus brasiliensis</i> ATCC® 16404™†	100 Tests/Kit	R4711100
<i>Bacillus subtilis</i> ATCC® 6633™†	100 Tests/Kit	R4711221
<i>Brevundimonas diminuta</i> ATCC® 19146™†	100 Tests/Kit	R4711300
<i>Burkholderia cepacia</i> ATCC® 25416™†	100 Tests/Kit	R4715220
<i>Candida albicans</i> ATCC® 2091™†	100 Tests/Kit	R4711601
<i>Candida albicans</i> ATCC® 10231™†	100 Tests/Kit	R4711503
<i>Clostridium sporogenes</i> ATCC® 11437™†	100 Tests/Kit	R4711703
<i>Clostridium sporogenes</i> ATCC® 19404™†	100 Tests/Kit	R4711700
<i>Enterococcus faecalis</i> ATCC® 29212™†	100 Tests/Kit	R4717030
<i>Enterococcus faecium</i> ATCC® 35667™†	100 Tests/Kit	R4711956

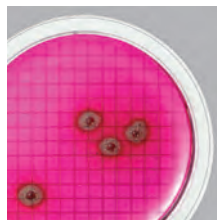
<i>Escherichia coli</i> ATCC® 8739™†	100 Tests/Kit	R4717085
<i>Escherichia coli</i> ATCC® 25922™†	100 Tests/Kit	R4717050
<i>Kocuria rhizophila</i> ATCC® 9341™†	100 Tests/Kit	R4714075
<i>Pseudomonas aeruginosa</i> ATCC® 9027™†	100 Tests/Kit	R4715210
<i>Salmonella</i> sp. serovar <i>Abony</i> NCTC 6017	100 Tests/Kit	R4716007
<i>Salmonella enterica</i> subsp. <i>enterica</i> serovar <i>Choleraesuis</i> ATCC® 10708™†	100 Tests/Kit	R4719001
<i>Salmonella enterica</i> subsp. <i>enterica</i> serovar <i>Enteritidis</i> ATCC® 4931™†	100 Tests/Kit	R4716008
<i>Salmonella enterica</i> subsp. <i>enterica</i> serovar <i>Typhimurium</i> ATCC® 13311™†	100 Tests/Kit	R4716100
<i>Salmonella enterica</i> subsp. <i>enterica</i> serovar <i>Typhimurium</i> ATCC® 14028™†	100 Tests/Kit	R4716000
<i>Serratia marcescens</i> ATCC® 8100™†	100 Tests/Kit	R4718001
<i>Shigella sonnei</i> ATCC® 25931™†	100 Tests/Kit	R4716300
<i>Staphylococcus aureus</i> subsp. <i>aureus</i> ATCC® 6538™†	100 Tests/Kit	R4717016
<i>Staphylococcus aureus</i> subsp. <i>aureus</i> ATCC® 6538P™†	100 Tests/Kit	R4719002
<i>Staphylococcus aureus</i> subsp. <i>aureus</i> ATCC® 29737™†	100 Tests/Kit	R4717020
<i>Staphylococcus epidermidis</i> ATCC® 12228™†	100 Tests/Kit	R4716500
<i>Streptococcus pyogenes</i> ATCC® 19615™†	100 Tests/Kit	R4717000
Blue Foam Rack	5/Pk.	R4700001



Quanti-Cult Plus showing an enlargement of the inside of the cap with a film of preserved microorganisms.



Escherichia coli Strain C1 WaterBug on mENDO Agar, membrane filtration method.



Pseudomonas aeruginosa WaterBug on mENDO Agar, membrane filtration method.